

2019 – 2020 PLAYBOOK



Powering and Connecting
Your World



UPS Systems



PDUs



Rack Enclosures



Cooling



KVMs



Cables



Connectivity



Charging Stations & Carts



Display Mounts

INTRODUCTION

Tripp Lite is an engineering-driven company dedicated to **Powering and Connecting Your World.**

With a wide range of products for applications from desktop to data centre, we're focused on providing unparalleled industry-leading value, product reliability and customer service to every corner of the globe.



Why Choose Tripp Lite?	4
-------------------------------	---

General Applications

Large Data Centre & MDF	6
Converged Infrastructure	8
Server Room & Small Data Centre	10
Network Closet & IDF	12
Remote Network Cabinet	14
Digital Signage	16
Mobility (Laptop/Tablet/Smartphone)	20
Small Office/Home Office/Desktop	21

Segment-Specific Applications

Education

Connected Classroom	24
---------------------	----

Retail

Modern Shopping	26
Point of Sale	28

Government

Secure Desktop	30
----------------	----

Healthcare

Complete Facility Protection	32
Point of Care	33

Tripp Lite Solutions

Network/Server UPS Systems	36
End-Point UPS Systems	37
Power Distribution Units (PDUs)	38
KVM Switches & IP Console Servers	39
Floor-Standing Racks	40
Wall-Mount Racks	42
Charging Stations & Carts	43
Cables & Connectivity	44
Display & Digital Signage Solutions	47
Display Mounts	49
Healthcare Solutions	50
Standing Desk Solutions	50
Inverter Solutions	51

WHY CHOOSE TRIPP LITE?

Harness the Power of a Trusted Reputation

Outstanding product reliability and exceptional service have been Tripp Lite trademarks for more than 95 years. Found in businesses worldwide, Tripp Lite products power and connect the computers, networking equipment and electronic devices that form the foundation of our connected world.

Experience & Innovation

For over 95 years, Tripp Lite has responded to changing technology and the needs of its customers. The result is a diverse range of more than 4,500 products with industry-leading features and performance to power, protect, manage, house, cool, connect and mount equipment.

- Trusted by IT professionals in over 90 countries worldwide
- ISO 9001-certified manufacturing and design standards underscore our commitment to quality
- Built on a foundation of product innovations, including the first UPS system to protect PCs from power problems

Sales & Service Worldwide

- 12 branch offices
- 8 training & demo centres
- 6 major distribution hubs
- 52 regional sales offices
- 250+ authorised repair and service centres
- Over 20 languages spoken

Serving 200+ distributors in over 90 countries!



Tripp Lite has received some of the industry's highest awards



Markets Served

Banks & Finance | Business & Commercial Theatre | Construction | Data Centre | Digital Display | Education
Enterprise | Government | Healthcare | Home Business & Consumer | Hospitality & Gaming | Industrial Automation
Mining, Oil & Gas | Retail | Security | Telecom/Datacom

Testimonials

"Tripp Lite's APS inverter/chargers are excellent because the protection and support are seamless. We don't even know when the power is off. We simply continue to work without interruption."

Matthew Robertson
Habitat for Humanity
Uganda



"Tripp Lite provides a wide range of excellent products that are suitable for all business power protection concerns and requirements. In addition, Tripp Lite was there for us with aggressive product service and support to ensure a satisfactory solution."

Maher Muhanna
Head of Information Technology
Al Ahli Bank of Kuwait
Dubai, UAE



APPLICATIONS

GENERAL APPLICATIONS



General Applications

Large Data Centre & MDF	6	Remote Network Cabinet	14
Converged Infrastructure	8	Digital Signage	16
Server Room & Small Data Centre	10	Mobility (Laptop/Tablet/Smartphone)	20
Network Closet & IDF	12	Small Office/Home Office/Desktop	21



Powering and Connecting
Your World

Large Data Centre & MDF

Tripp Lite premium SmartRack® enclosures and network-grade PDUs provide a rock-solid foundation for critical systems in large data centres. Complementary solutions like cables, KVM switches and UPS systems enhance core infrastructure for servers and network hardware. Tripp Lite can also customise solutions for large installations.

TRIPP LITE SOLUTIONS

A Rack Enclosures (p. 40)

- House up to 1,360 kg of EIA-compliant rack equipment
- Support efficient hot-aisle/cold-aisle configurations

B Open Frame Racks (p. 40)

- Provide ample space for cabling and cable management

C Power Distribution Units (p. 38)

- PDUs provide up to 48 outlets and 28.8 kW
- Optional current monitoring and outlet control

D Cables & Connectivity (p. 44)

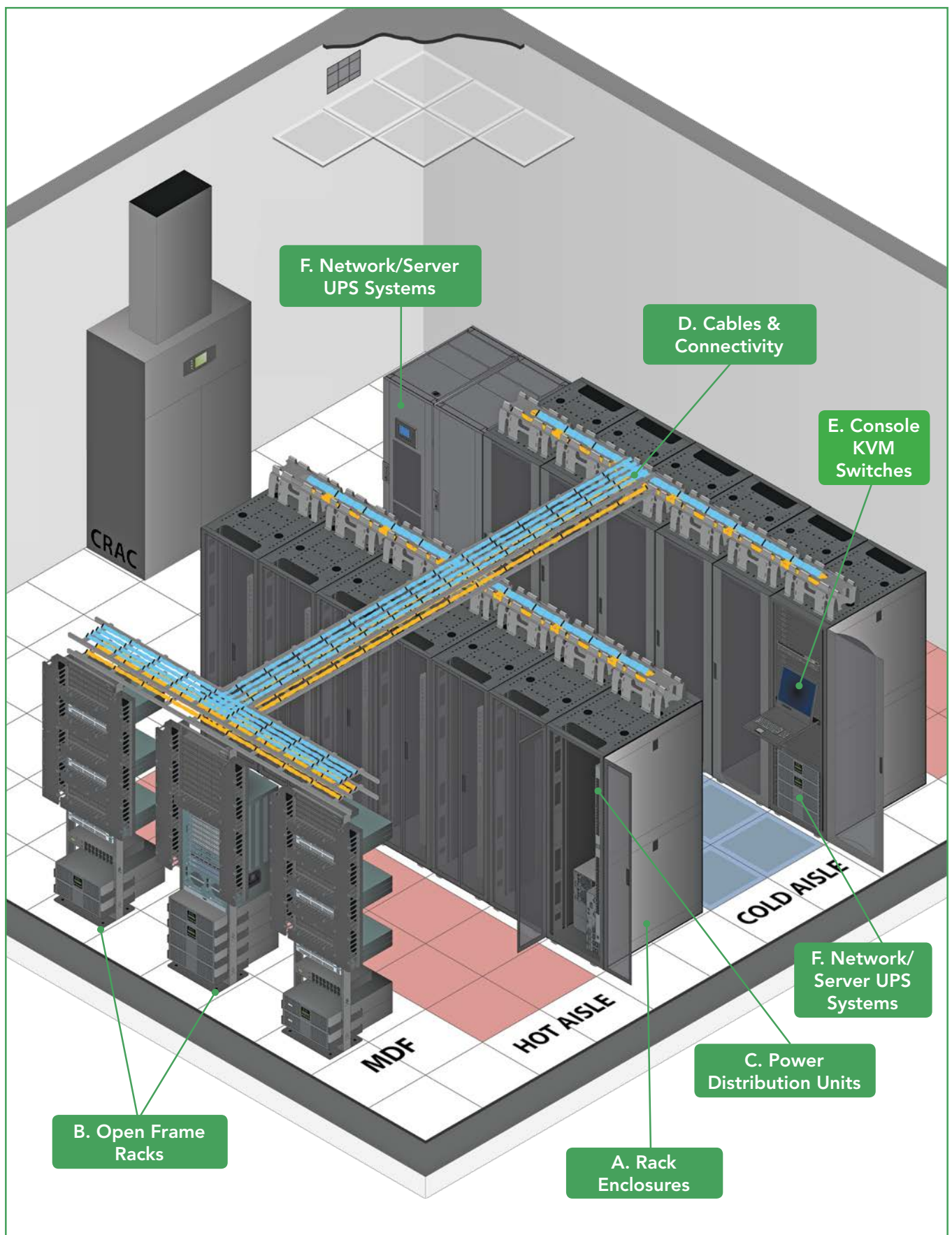
- Copper and fibre network cables and patch panels

E Console KVM Switches (p. 39)

- 1U foldaway LCD consoles
- Optional IP remote access

F Network/Server UPS Systems (p. 36)

- Pure sine wave power with reliable battery backup
- Optional network cards



GENERAL APPLICATIONS

Converged Infrastructure

Converged and hyper-converged infrastructure solutions may lack key components to protect core hardware from power problems and provide backup during outages. Without power protection, the solutions can't provide the continuous on-demand availability required from critical virtualized systems. Intelligent Tripp Lite solutions also provide the crucial power monitoring and control capability needed for failover procedures to function properly during power outages.

For hyper-converged infrastructure appliances and à la carte converged infrastructure solutions, Tripp Lite solutions can also house, organise, cool, connect, access and manage critical hardware components.

TRIPP LITE SOLUTIONS

A Network/Server UPS Systems (p. 36)

- Pure sine wave power with reliable battery backup
- Optional network cards

B Power Distribution Units (PDUs) (p. 38)

- PDUs provide up to 48 outlets and 28.8 kW
- Optional current monitoring and outlet control

C Rack Enclosures (p. 40)

- House up to 1,360 kg of EIA-compliant rack equipment

D Portable Air Conditioning Units

- Efficient close-coupled cooling
- Cooling capacities up to 12,000 BTU

E Blanking Panels

- 1U panels snap into unused rack spaces to prevent bypass airflow (undesirable recirculation of warm equipment exhaust)

F Console KVM Switches (p. 39)

- 1U foldaway LCD consoles
- Optional IP remote access

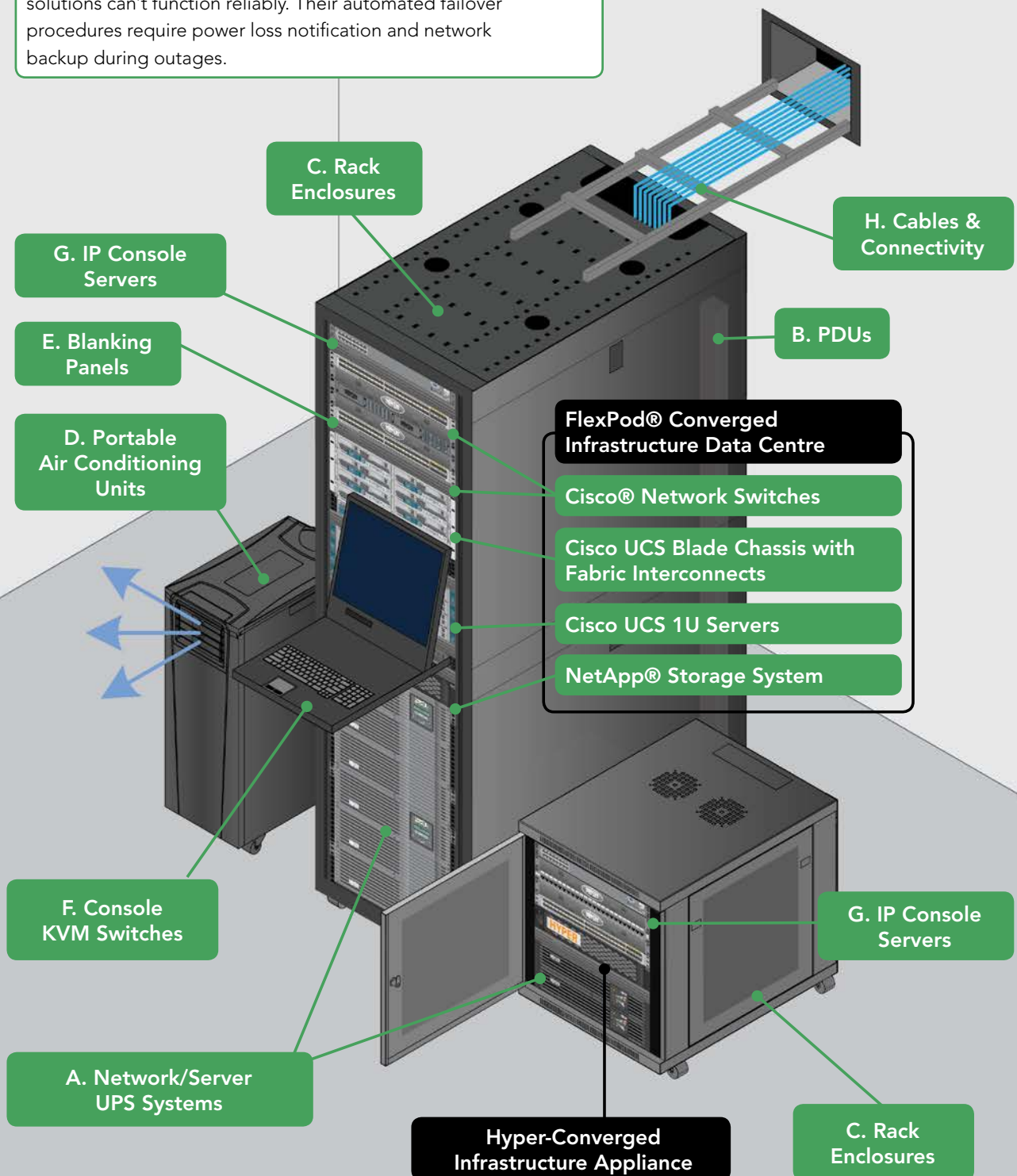
G IP Console Servers (p. 39)

- Provide secure in-band (primary network) and out-of-band (fail-safe) access to serial- and network-connected devices

H Cables & Connectivity (p. 44)

- Copper and fibre network cables and patch panels
- Power cords optimised for IT applications

Without intelligent power protection, converged infrastructure solutions can't function reliably. Their automated failover procedures require power loss notification and network backup during outages.



Server Room and Small Data Centre

You don't need hundreds of racks to build a secure, efficient, manageable IT installation. And whether you call it a data centre, a server room or a computer room, a smaller installation can benefit from high-availability, high-efficiency solutions and best practices borrowed from enterprise data centre infrastructure.

TRIPP LITE SOLUTIONS

A Network/Server UPS Systems (p. 36)

- Pure sine wave power with reliable battery backup
- Optional network cards

B Racks (p. 40)

- House up to 1,360 kg of EIA-compliant rack equipment
- Provide ample flow-through ventilation to keep equipment running efficiently

C Power Distribution Units (p. 38)

- Up to 48 outlets and 28.8 kW
- Optional current monitoring and outlet control

D Cables & Connectivity (p. 44)

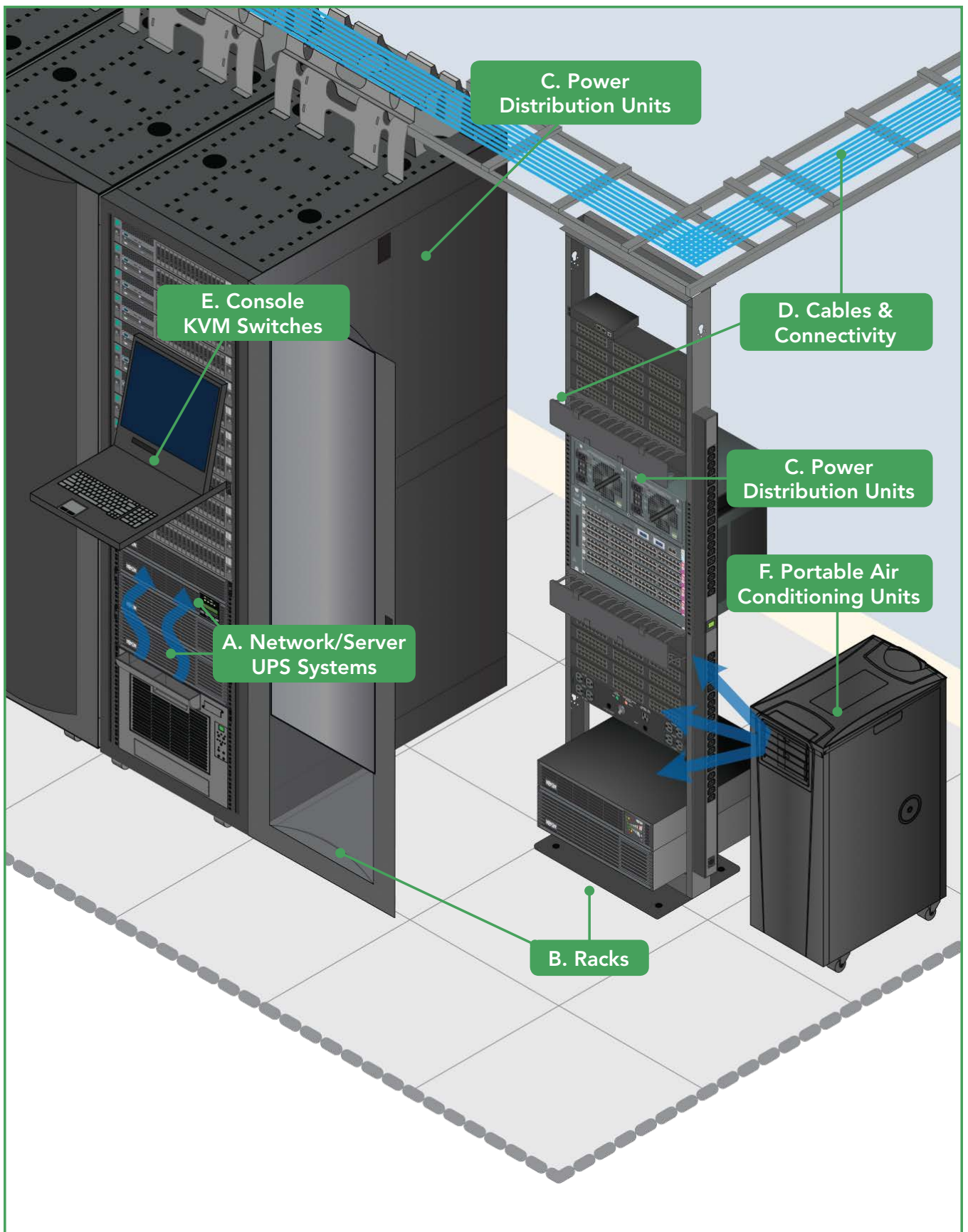
- Network cables, patch panels and power cords

E Console KVM Switches (p. 39)

- 1U foldaway LCD consoles
- Optional IP remote access

F Air Conditioning Units

- Close-coupled cooling up to 12,000 BTU



Network Closet & IDF

Traditional network/telecom wiring closet designs can't handle the increased wattage and heat output of network switches used to power PoE devices, requiring upgrades to power and cooling infrastructure. In addition, applications like VoIP require longer runtimes to support the needs of critical and emergency communications. Tripp Lite provides a wide range of solutions suitable for both traditional low-power, low-heat wiring closets and high-power, high-heat network closets required for modern PoE networks.

TRIPP LITE SOLUTIONS

A Open Frame Racks (p. 40)

- 2-post and 4-post models
- Ample space for cabling and cable management
- Heavy-duty models hold up to 1,360 kg

B Network/Server UPS Systems (p. 36)

- Sine wave power with battery backup
- Optional network cards

C Cables & Connectivity (p. 44)

- Copper and fibre network cables and patch panels
- Power cords optimised for IT applications

D IP Console Servers (p. 39)

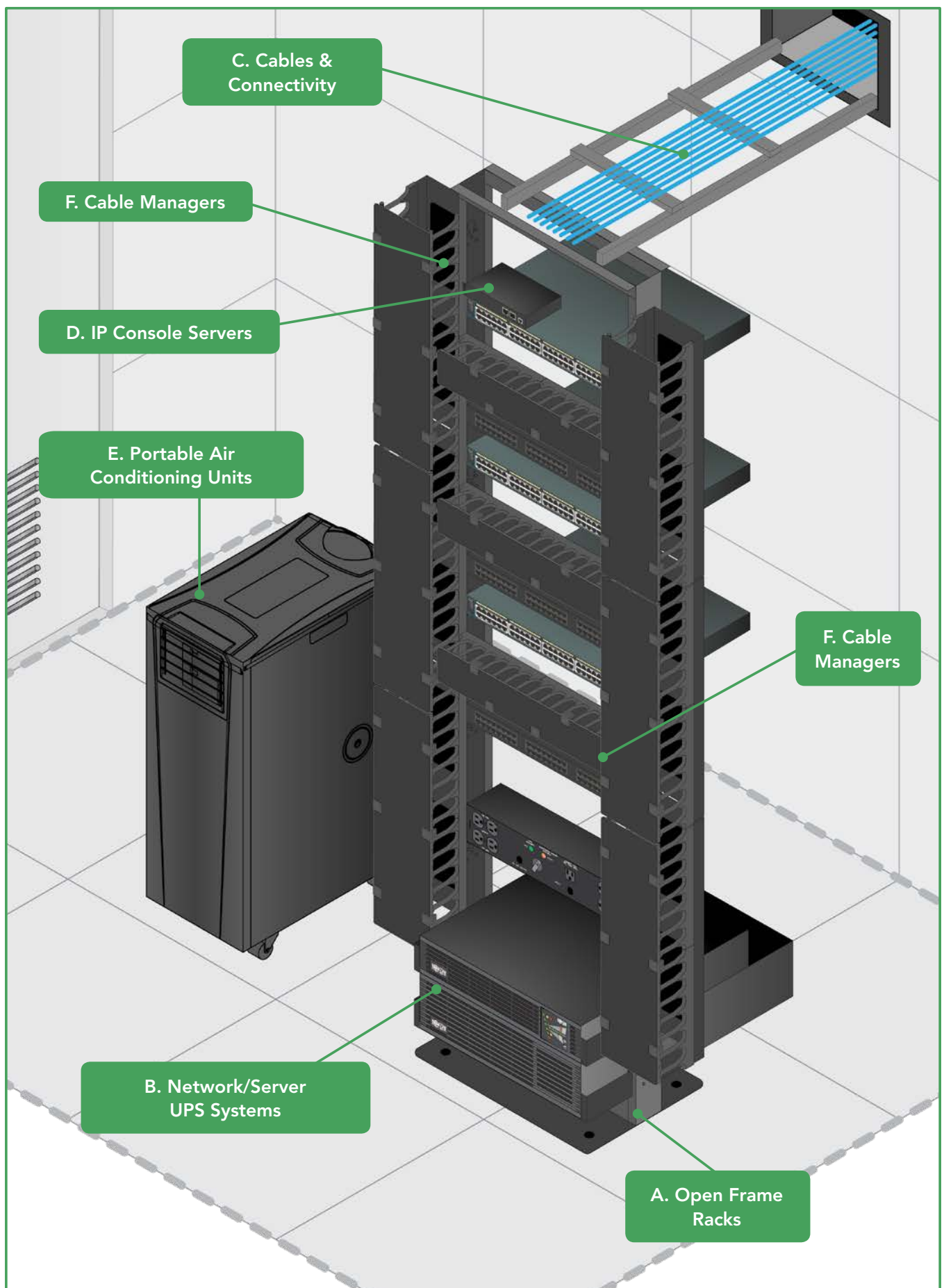
- Provide secure in-band (primary network) and out-of-band (fail-safe) access to serial- and network-connected devices

E Portable Air Conditioning Units

- Efficient close-coupled cooling
- Cooling capacities up to 12,000 BTU

F Cable Managers

- Secure and organise large quantities of network patch cables
- Horizontal models and vertical models with toolless mounting
- Reduce installer errors, increase cooling efficiency and facilitate changes and troubleshooting



Remote Network Cabinet

Network devices are often required in remote locations and open-access areas that are vulnerable to tampering, theft and vandalism. Tripp Lite offers a wide variety of wall-mount cabinets that lock to keep important equipment secure, but offer convenient access for authorised personnel.

In addition, any merchant that processes, stores or transmits credit and debit card information needs to meet standards set by the payment card industry. All Tripp Lite rack cabinets and enclosures meet the enclosure standards required for PCI compliance.

TRIPP LITE SOLUTIONS

A Wall-Mount Rack Enclosures (p. 42)

- Locking steel cabinets from 2U to 26U in a variety of depths
- Optional casters available for floor-standing applications

B Network/Server UPS Systems (p. 36)

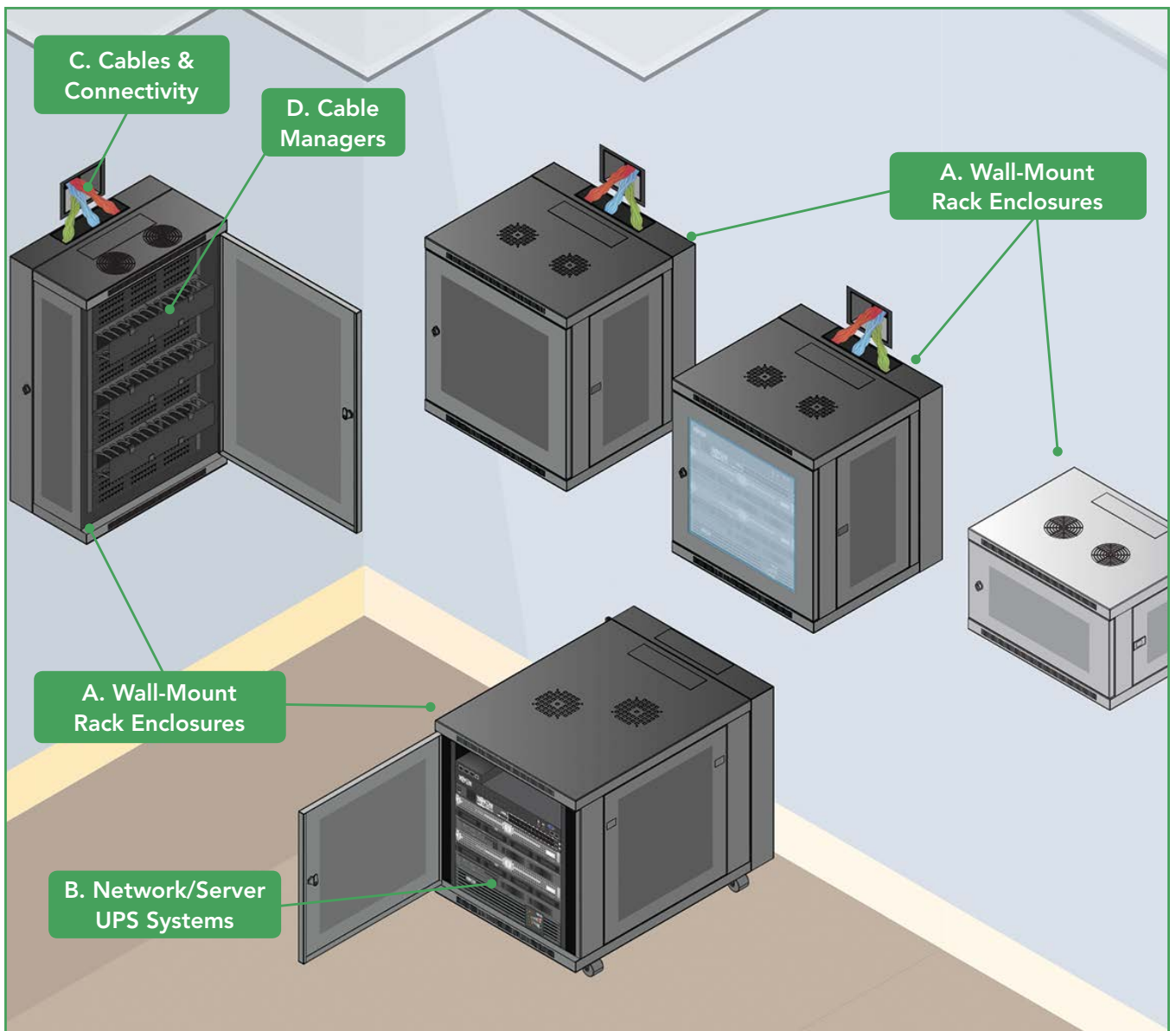
- Reliable battery backup and pure sine wave power

C Cables & Connectivity (p. 44)

- Copper and fibre network cables and patch panels

D Cable Managers

- Secure and organise network patch cables



Digital Signage

When prices for high-quality large-format displays (LFDs) reached commodity levels, the market for digital signage accelerated. Now that digital signage is enjoying widespread adoption, sales opportunities are expanding. The worldwide market is expected to reach \$27.34 billion by 2022 (MarketsandMarkets Digital Signage Market Forecast).

TRIPP LITE SOLUTIONS

A Display Extenders (p. 47)

- Deliver high-resolution video signals (with or without audio) over efficient Cat5e/6/6a cabling to displays up to 610 m away
- See p. 18 for connection detail

B Wall-Mount Racks (p. 42)

- Locking steel cabinets from 2U to 26U in a variety of depths
- Optional casters available for floor-standing applications
- Keep A/V sources and other equipment secure and organised

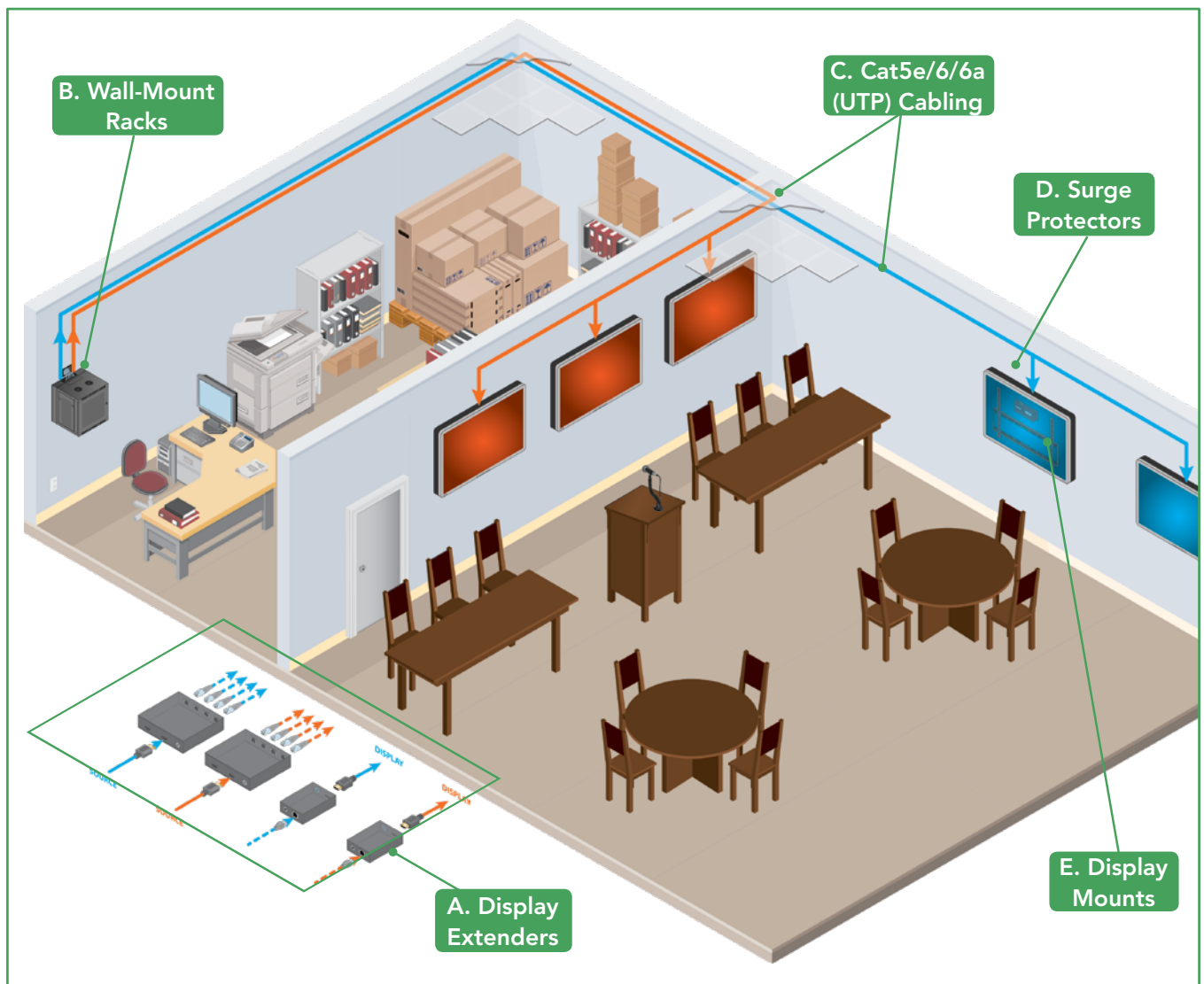
C Cat5e/6/6a (UTP) Cabling (p. 44)

D Surge Protectors

- Prevent source/display damage and filter EMI/RFI noise

E Display Mounts (p. 49)

- Provide sturdy, VESA-compliant installation for displays
- Wall, desk, ceiling, sit-stand, fixed, tilting, full-motion
- Support displays up to 254 cm and 159 kg



Digital Signage (Connection Detail)

The display itself is only the visible endpoint of a digital signage solution that may incorporate many components. Tripp Lite products are used primarily in the infrastructure space around and between source(s) and display(s), providing everything required to connect sources to displays in any environment.

TRIPP LITE SOLUTIONS

A Display Extenders (p. 47)

- Deliver high-resolution video signals (with or without audio) over efficient Cat5e/6/6a cabling to displays up to 610 m away
- Support HDMI, DisplayPort, DVI, VGA and Component AV signals
- AV over IP extenders support any-to-any IP network multicast with up to 64 sources and 255 displays

B Cat5/6/6a (UTP) Cabling (p. 44)

C Display Mounts (p. 49)

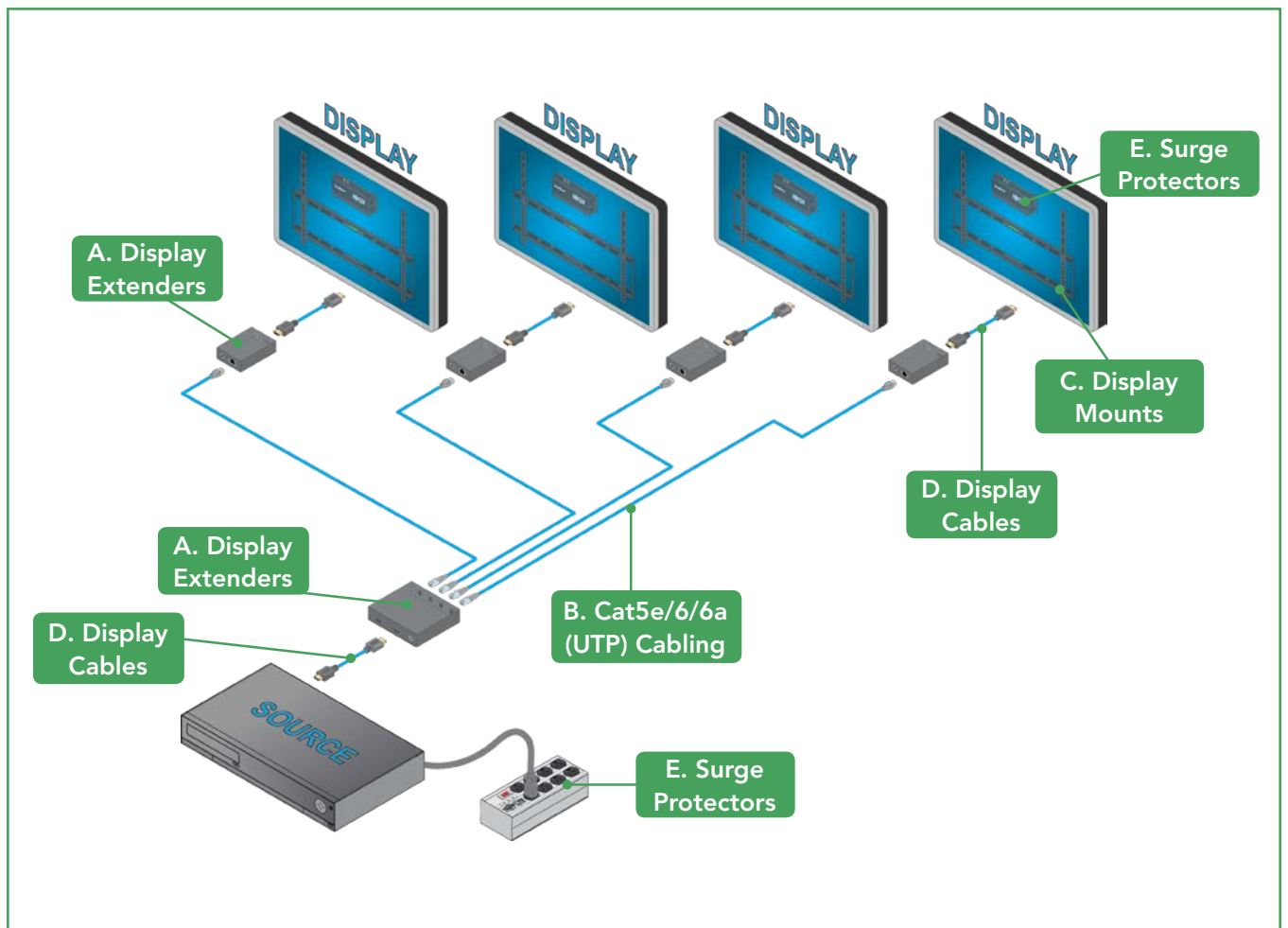
- Provide sturdy, VESA-compliant installation for displays
- Wall, desk, ceiling, sit-stand, fixed, tilting, full-motion
- Support displays up to 254 cm and 159 kg

D Display Cables (p. 47)

- Connect extender endpoints or provide direct connections for distances of 30 m or less
- HDMI, DisplayPort, DVI, VGA, AV

E Surge Protectors

- Prevent source/display damage and filter EMI/RFI noise



GENERAL APPLICATIONS

Mobility (Laptop/Tablet/Smartphone)

Improve the functionality of laptops, tablets and smartphones. Whether at home, at the office or on the go, Tripp Lite has solutions to:

- Expand—Add ports for more devices
- Adapt—Connect devices with dissimilar connectors
- Power—Charge devices in the office or on the go
- Protect—Prevent damage from power surges

TRIPP LITE SOLUTIONS

A Charging Stations & Carts (p. 43)

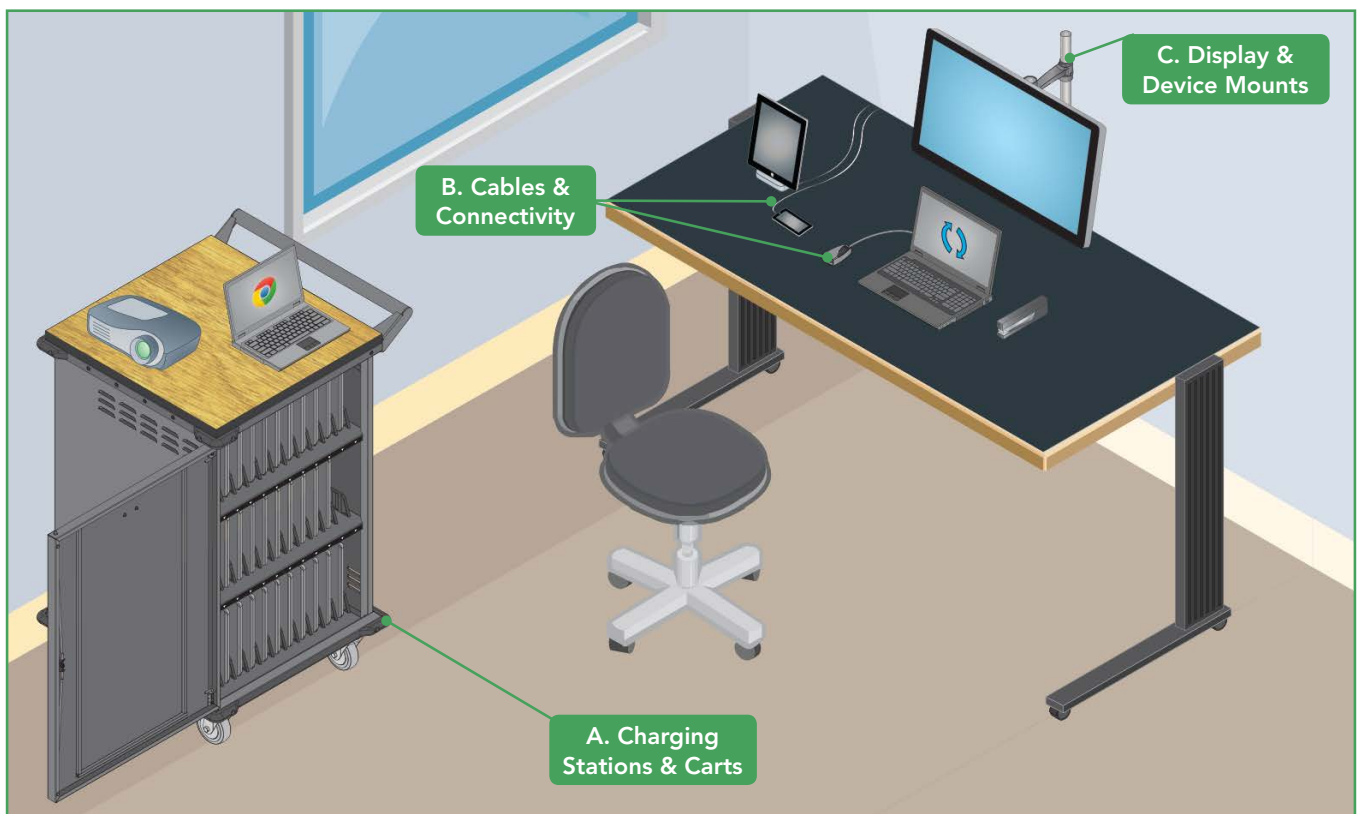
- USB and AC charging for tablets, laptops and other devices
- Carts, stations and standalone chargers

B Cables & Connectivity (p. 44)

- Adapters • Charging cords

C Display & Device Mounts (p. 49)

- Sturdy, VESA-compliant installation for displays up to 254 cm and 159 kg



Small Office/Home Office/Desktop

Tripp Lite's solutions for office/desktop applications power, protect and connect every piece of equipment with a plug or a port, including desktop computers, laptops, mobile devices, displays, printers and office equipment.

TRIPP LITE SOLUTIONS

A End-Point UPS Systems (p. 36)

- Surge/noise protection and reliable battery backup

B Surge Protectors

- Convenient outlets with robust surge/noise protection

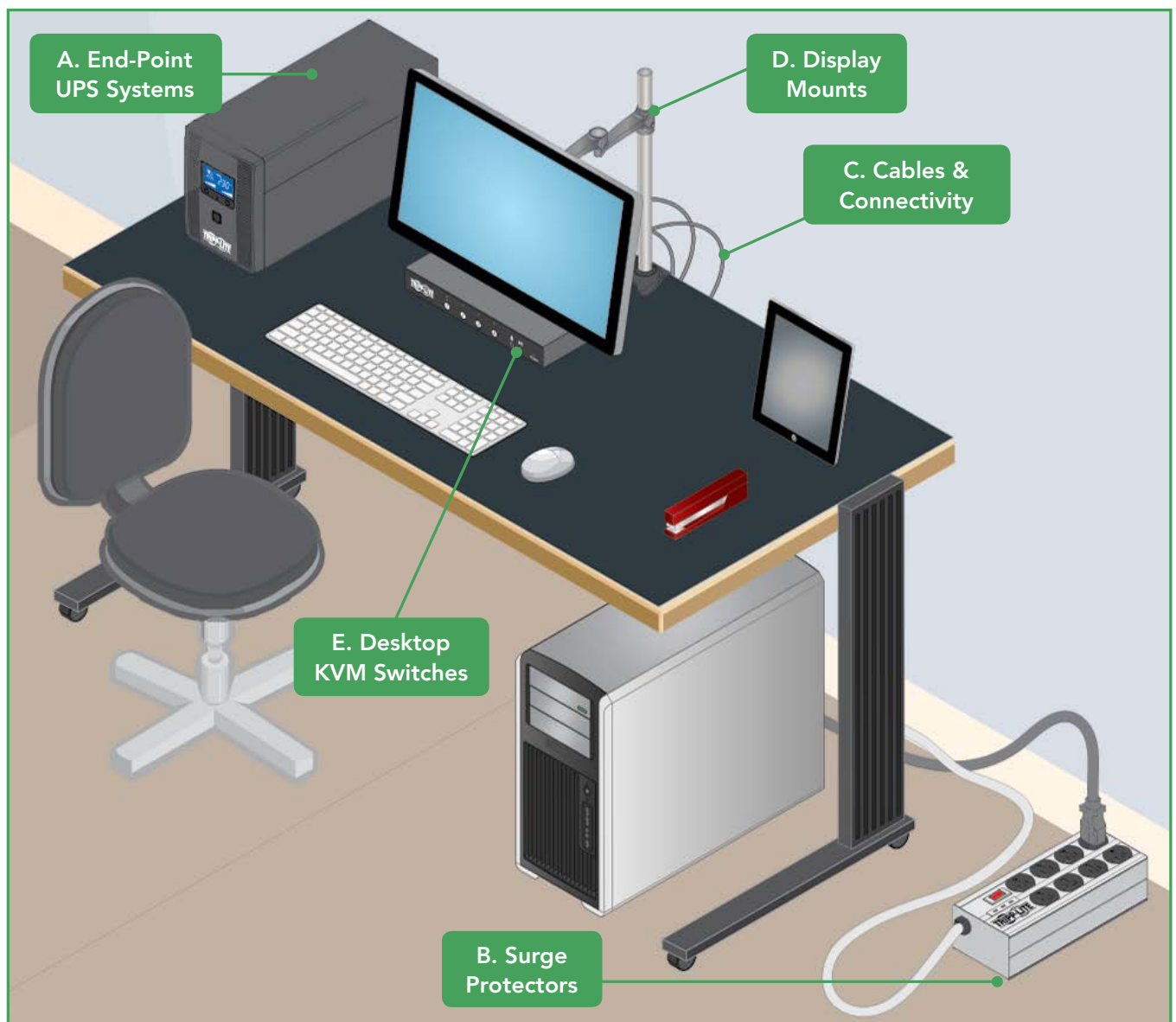
C Cables & Connectivity (p. 44)

- Network, PC and power cables

D Display Mounts (p. 49)

- Sturdy, VESA-compliant installation for displays up to 610 mm

E Desktop KVM Switches (p. 39)



SEGMENT-SPECIFIC APPLICATIONS



EDUCATION



GOVERNMENT



RETAIL



HEALTHCARE





Segment-Specific Applications

Education

Connected Classroom..... 24

Retail

Modern Shopping 26

Point of Sale 28

Government

Secure Desktop..... 30

Healthcare

Complete Facility Protection 32

Point of Care 33



Powering and Connecting
Your World

Connected Classroom

As technology continues to transform the classroom, educational organisations of all sizes face the difficult task of supporting growing technology use while budgets are under pressure. Tripp Lite offers high-quality solutions that keep classrooms on the cutting edge while keeping expenditures under control.

TRIPP LITE SOLUTIONS

A End-Point UPS Systems (p. 37)

- Protect and back up computer systems and peripherals

B Surge Protectors

- Keep equipment safe from damaging transient voltages

C Display & Digital Signage Solutions (p. 47)

- Deliver high-resolution video signals (with or without audio) to distant displays

D Display Mounts (p. 49)

- Provide VESA-compliant installation for displays up to 254 cm and 159 kg

E Charging Stations & Carts (p. 43)

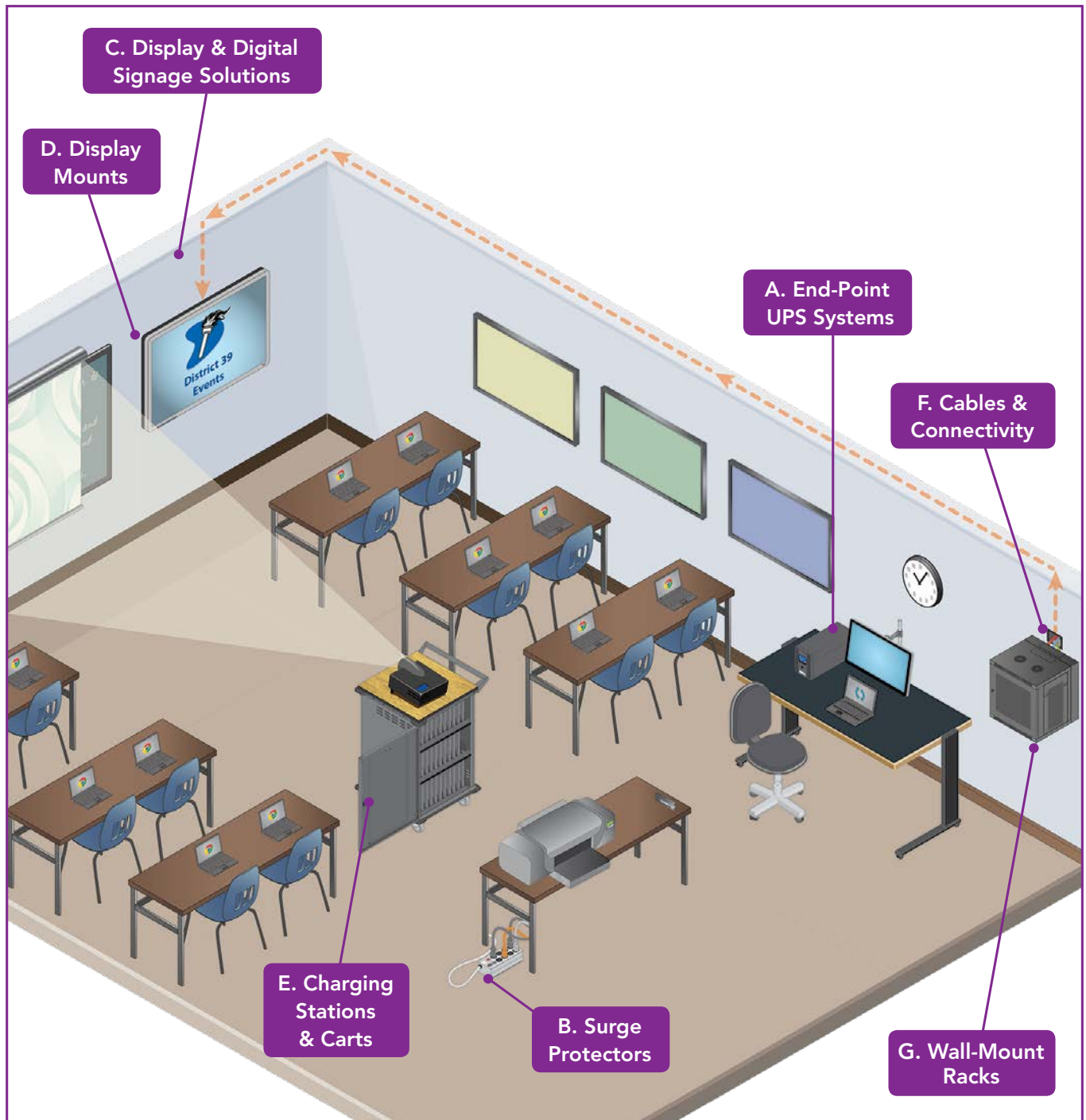
- Provide high-speed USB or AC charging, secure storage and flexible deployment options for tablets and other devices

F Cables & Connectivity (p. 44)

- Connect devices to network, power, data and AV sources

G Wall-Mount Racks (p. 42)

- Secure and organise equipment in locations with limited space



Modern Shopping

From the sales floor to the back office, Tripp Lite has solutions to keep modern retail operations running smoothly and efficiently without interruption. This includes emergency backup power to conduct transactions in the event of an outage and uninterrupted power for security cameras and equipment to ensure customer and employee safety.

TRIPP LITE SOLUTIONS

A End-Point UPS Systems (p. 37)

- Protect and back up computer/POS systems and peripherals

B Wall-Mount Racks (p. 42)

- Secure and organise equipment in locations with limited space

C Display & Digital Signage Solutions (p. 47)

- Deliver high-resolution video signals (with or without audio) to distant displays

D Desktop KVM Switches (p. 39)

- Access multiple computers from a single console (keyboard, monitor and mouse)

E Cables & Connectivity (p. 44)

- Connect devices to network, power, data and AV sources

F Surge Protectors & Power Strips

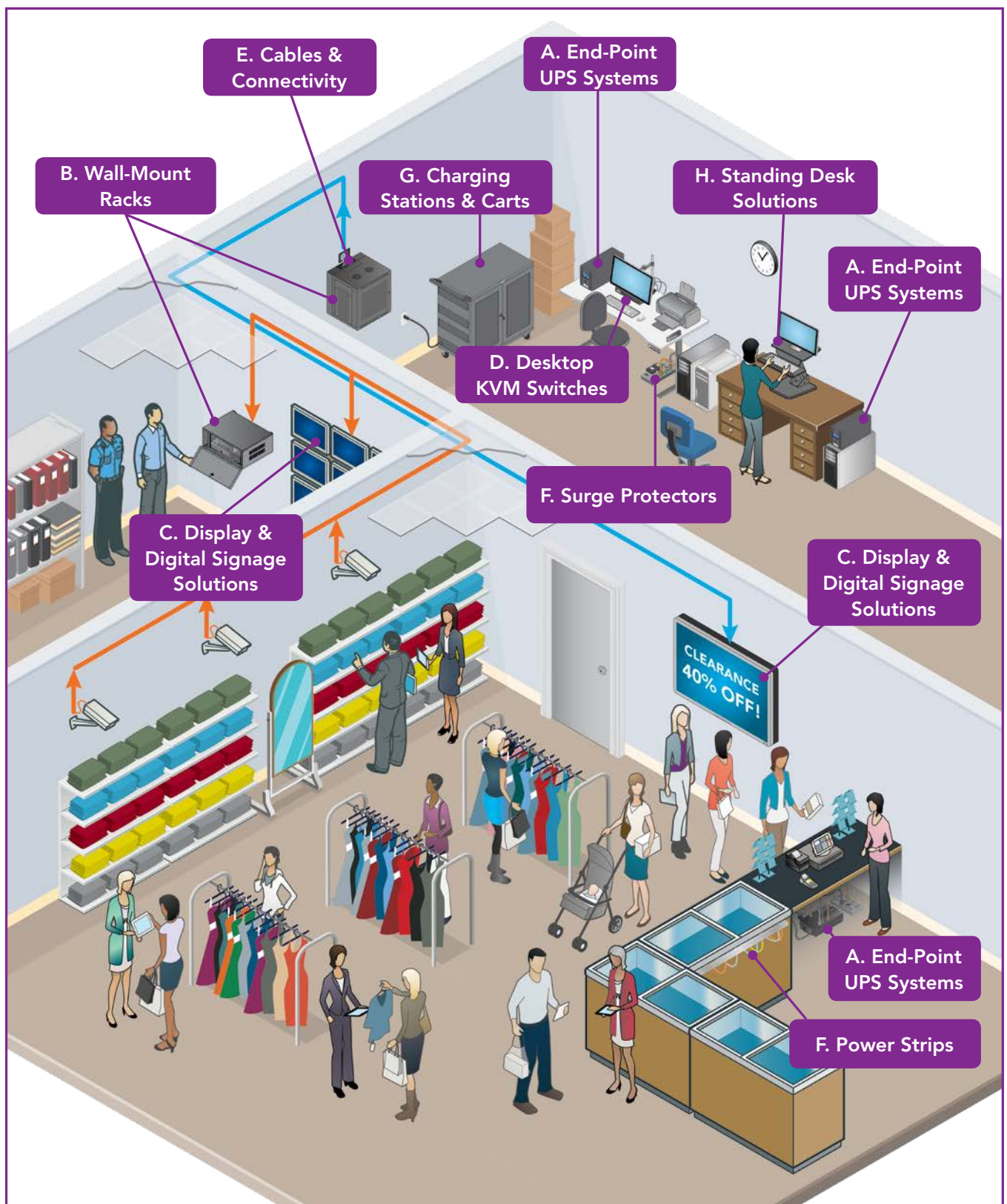
- Provide convenient outlets and protect equipment from surges

G Charging Stations & Carts (p. 43)

- Provide high-speed USB or AC charging, secure storage and flexible deployment for tablets and other devices

H Standing Desk Solutions (p. 50)

- Improve workspace ergonomics by customising desk height for sitting, standing and the comfort of different users



Point of Sale

Today's point-of-sale (POS) systems are much more than cash registers. They have become the focal point of interaction with customers. Without protection and support, retail operations can grind to a halt in a flash.

TRIPP LITE SOLUTIONS

A End-Point UPS Systems (p. 37)

- Protect and back up computer/POS systems and peripherals

B Surge Protectors & Power Strips

- Provide convenient outlets and protect equipment from surges

C Network/Server UPS Systems (p. 36)

- On-line operation or automatic voltage regulation (AVR)
- Reliable, expandable battery backup
- Pure sine wave power
- Optional network cards

D Wall-Mount Racks (p. 42)

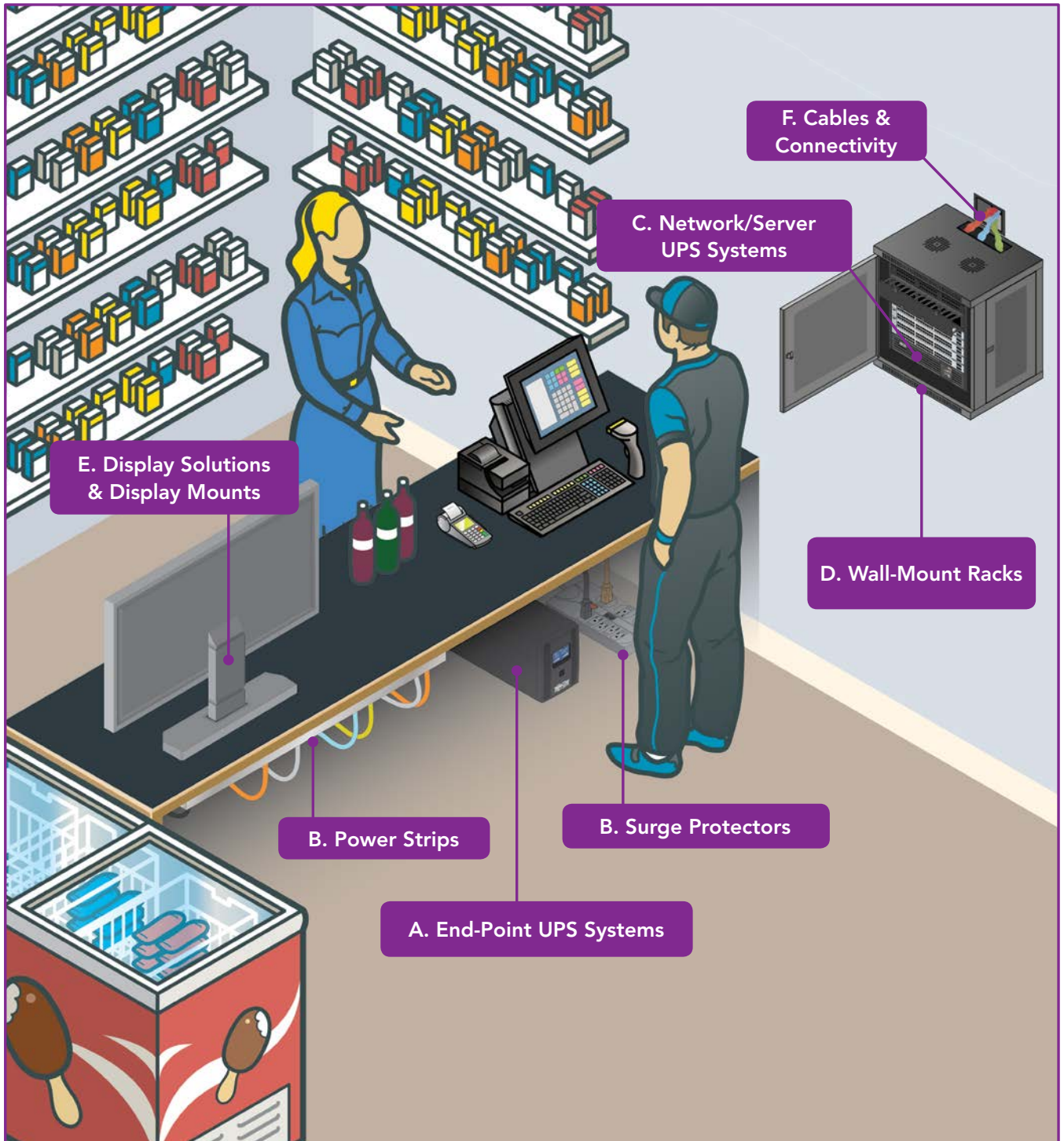
- Secure and organise equipment in locations with limited space
- Support PCI-DSS compliance for payment card processing

E Display Solutions & Display Mounts (p. 47)

- Deliver high-resolution video signals (with or without audio) to distant displays
- Display mounts provide sturdy, VESA-compliant installation for displays up to 254 cm and 159 kg

F Cables & Connectivity (p. 44)

- Connect devices to network, power, data and AV sources



Secure Desktop

Government organisations, intelligence agencies, defense contractors and all private companies with sensitive and valuable data need to follow strict protocols for desktop security. This is especially true when users switch between secure and unsecure networks. Secure desktops also need protection from power problems that threaten productivity.

TRIPP LITE SOLUTIONS

A Secure Desktop KVM Switches (p. 39)

- Access multiple computers connected to secure and unsecure networks from a single console (keyboard, monitor and mouse)

B End-Point UPS Systems (p. 37)

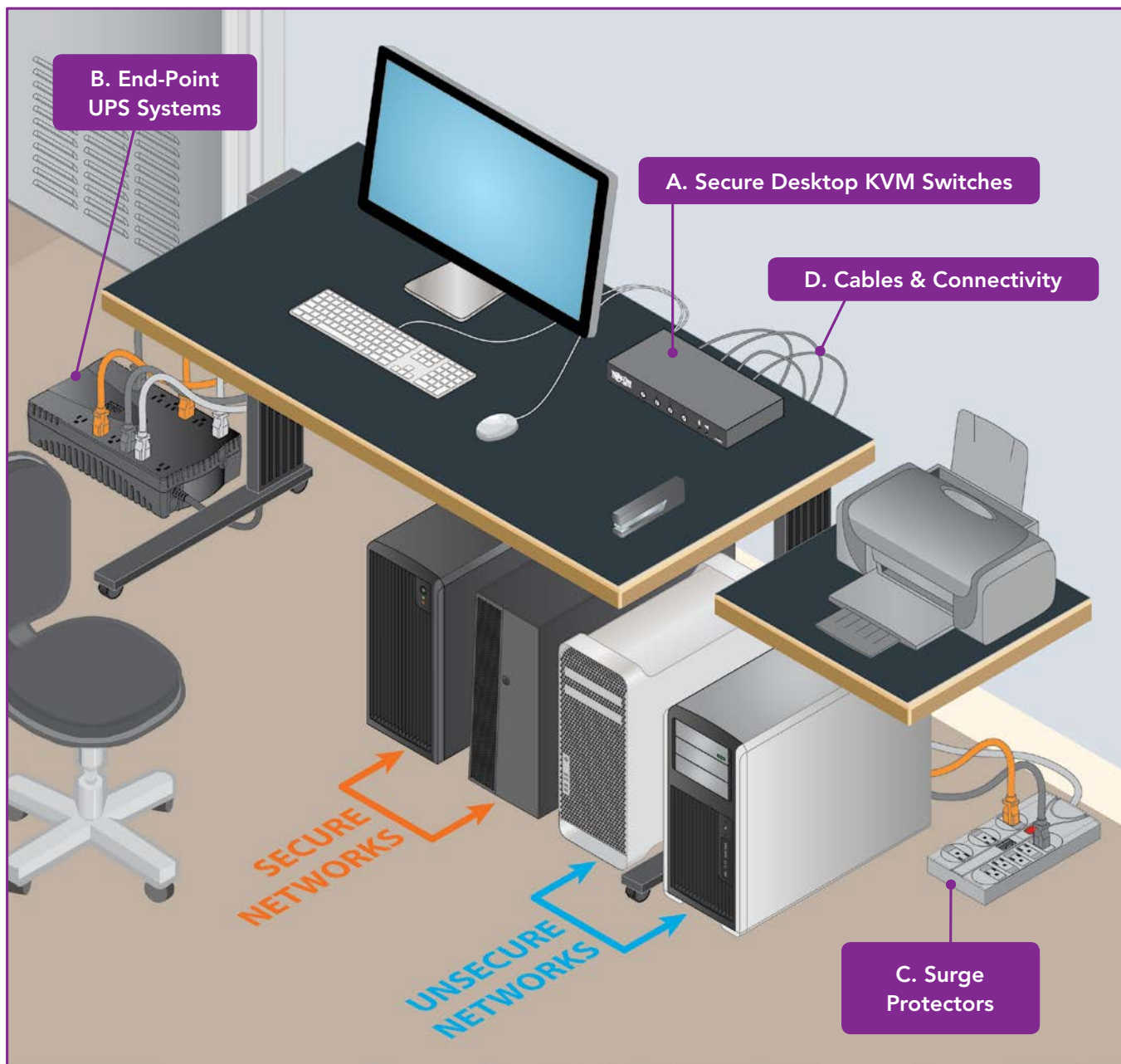
- Surge/noise protection and battery backup
- With or without automatic voltage regulation (AVR)

C Surge Protectors

- Protect It!® models with robust surge/noise protection
- Premium Isobar® models with isolated filter banks
- Data line protection available

D Cables & Connectivity (p. 44)

- Connect devices to network, power, data and AV sources



HEALTHCARE APPLICATIONS



Complete Facility Protection

Tripp Lite manufactures power protection, power supply and regulatory compliance solutions for use in hospitals and other types of healthcare facilities worldwide. Medical-grade UPS systems, isolation transformers, mobile power solutions and power strips support a wide range of medical and non-medical equipment and applications, both inside and outside patient care vicinities.



WARNING



Computers, monitors and other devices used near patients are potential hazards and violate codes unless connected to products approved for patient care vicinities.

RECOMMENDED TRIPP LITE SOLUTIONS

		Medical-Grade UPS	Medical-Grade Mobile Power Kits	Medical-Grade Power Strips	Medical-Grade Isolation Transformers	UPS Systems	Power Distribution Units (PDUs)	Racks/Rack Enclosures	Wall-Mount Enclosures	Cooling Solutions	Cables and Cable Managers	Display Solutions	KVM Solutions	Display Mounts	Surge Protectors	Power Inverters	Power Strips
Point of Care	Patient/Exam/ER/Operating Room	+	+	+	+			+	+	+	+	+		+			
	Mobile Modalities/Telemedicine	+	+	+	+	+					+	+		+			
IT Infrastructure	Data Centre/Server Room					+	+	+	+	+		+					
	Network/Telecom Wiring Closet					+	+	+	+	+							
	Nurses' Station/Administration	+	+	+	+	+		+		+	+	+	+	+	+		+
Medical Devices/Equipment	Laboratory/Diagnostics/Forensics	+	+	+	+	+		+	+	+	+	+	+	+			
	Imaging/Radiology Workstation	+	+	+	+	+		+	+	+	+	+	+	+			
Visual Solutions	Digital Signage/Meeting Room					+		+	+		+	+		+	+		+
	Admissions/Waiting Area	+		+		+		+	+		+	+		+	+		+
General Maintenance/Operations	Utilities/Electrical/Building Management					+	+	+		+	+				+	+	+
	Security/Guard Station					+		+	+	+	+	+	+	+	+		+
	Pharmacy/Cafeteria/Point of Sale	+	+	+	+	+		+	+		+	+	+	+	+		+
	Ambulance/EMS Vehicle										+					+	

Point of Care

As technology continues to transform medicine, healthcare organisations must meet government, industry and internal mandates as diverse as electronic patient records, unified communications and ensuring patient safety around electronic devices.

Tripp Lite healthcare solutions provide reliable power for medical and non-medical equipment inside and outside the patient care vicinity, while supporting regulatory code compliance and patient/staff safety.

TRIPP LITE SOLUTIONS

A Medical-Grade UPS Systems (p. 50)

- Protect and back up devices inside or outside patient care vicinity

B Medical-Grade Isolation Transformers (p. 50)

- Provide full isolation inside or outside patient care vicinity

C Medical-Grade Power Strips (p. 50)

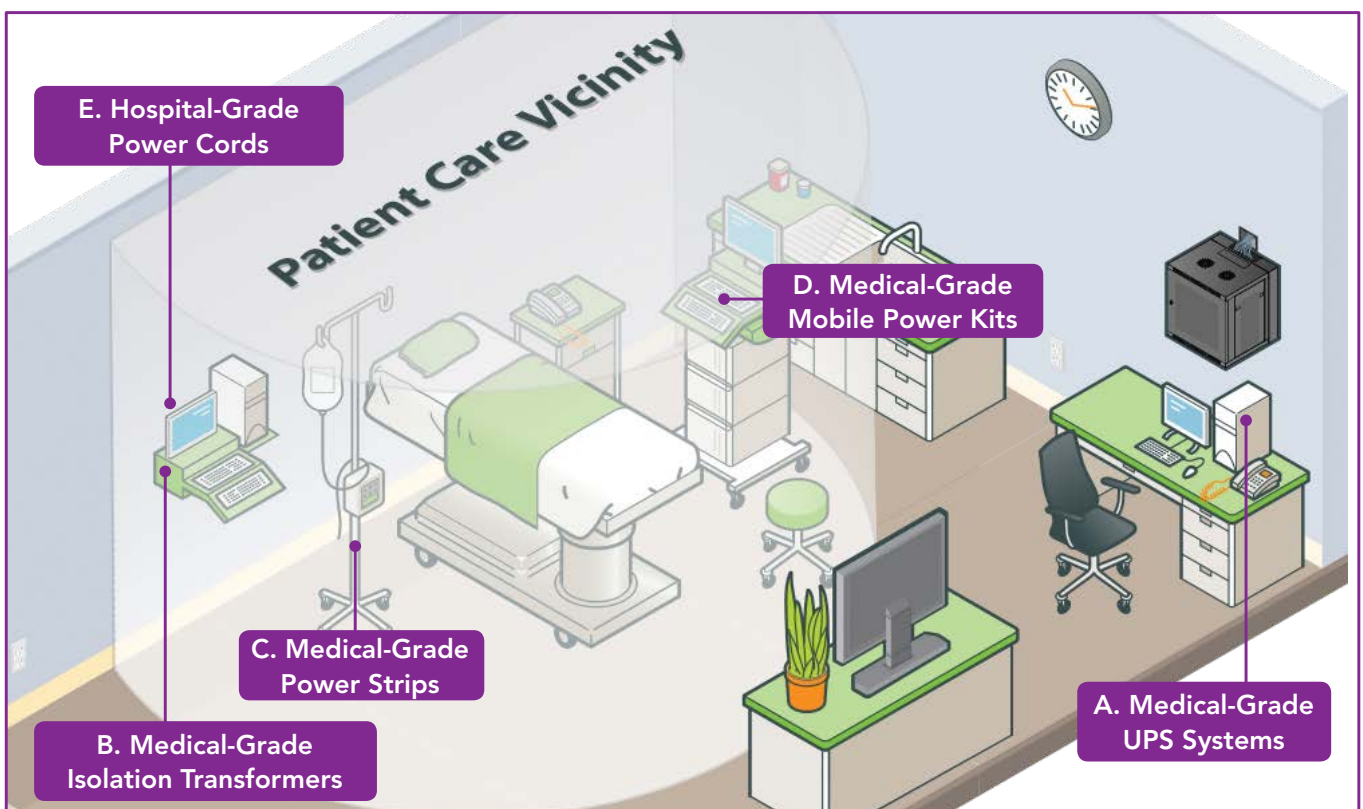
- Provide convenient outlets inside or outside patient care vicinity

D Medical-Grade Mobile Power Kits (p. 50)

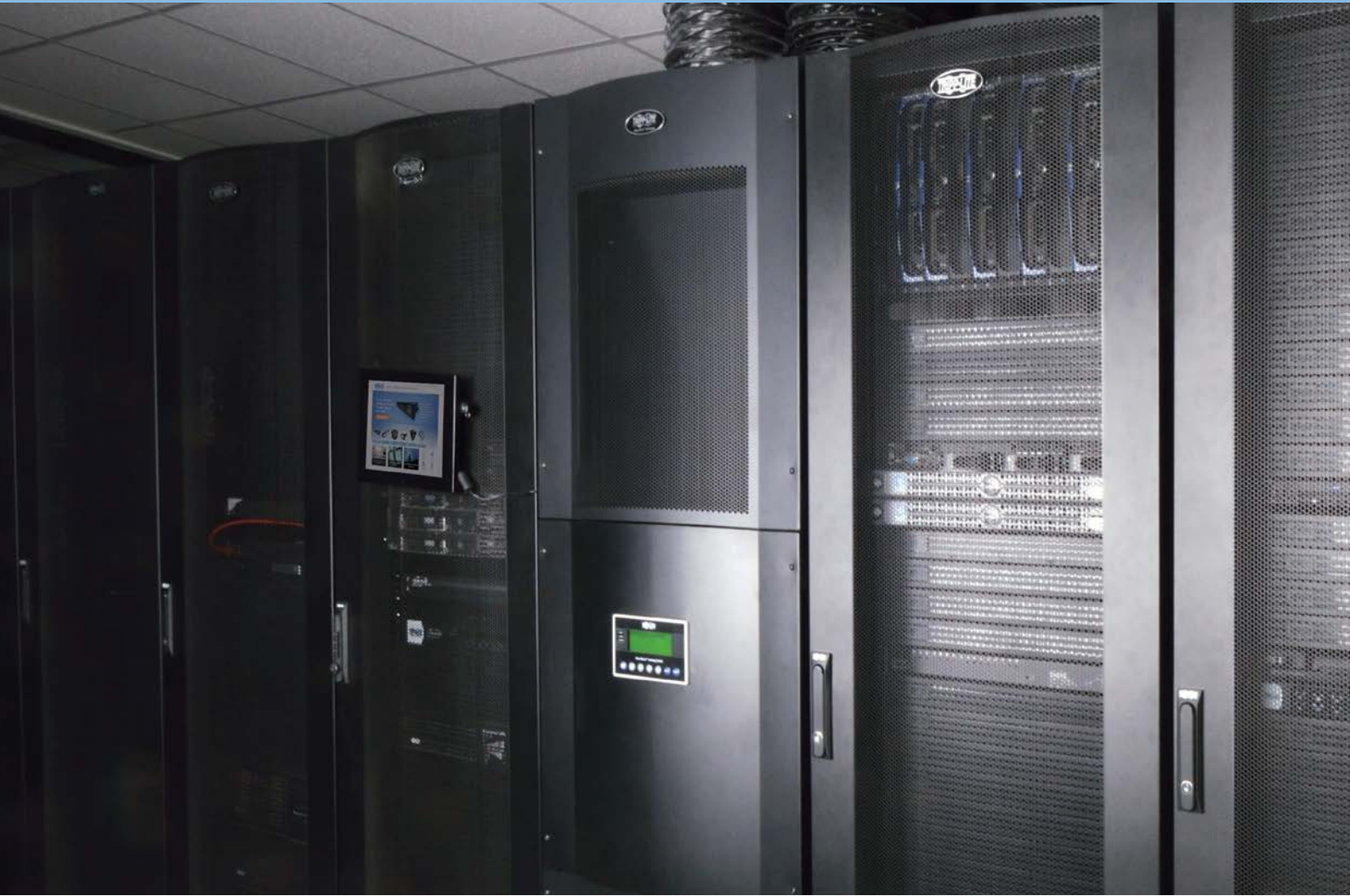
- Power for mobile carts inside or outside patient care vicinity

E Hospital-Grade Power Cords (p. 44)

- Replacement power and extension cords designed for healthcare environments



TRIPP LITE SOLUTIONS





Tripp Lite Solutions

Network/Server UPS Systems.....	36	Cables & Connectivity.....	44
End-Point UPS Systems.....	37	Display & Digital Signage Solutions	47
Power Distribution Units (PDUs)	38	Display Mounts	49
KVM Switches & IP Console Servers	39	Healthcare Solutions	50
Floor-Standing Racks.....	40	Standing Desk Solutions.....	50
Wall-Mount Racks	42	Inverters Solutions	51
Charging Stations & Carts	43		



Powering and Connecting
Your World

PRODUCTS

NETWORK/SERVER UPS SYSTEMS



Network/Server UPS Systems

- Protect critical equipment like servers and network hardware
- SmartPro® models provide sine wave output and use AVR to correct brownouts and overvoltages without using battery power
- SmartOnline® models use on-line, double-conversion operation to provide the highest level of power protection and precisely regulated pure sine wave output
- Include PowerAlert® software, network card slot and USB and/or serial ports
- Hot-swappable models include bypass switch to help eliminate maintenance/repair downtime

TRIPP LITE'S TOP SELLERS

SmartPro® Line-Interactive UPS Systems

Model	Output Capacity	Input
SMX500RT1U	500VA/300W	C14 Inlet
SMX1000RT2U	1000VA/900W	C14 Inlet
SMX1200XLHG	1000VA/750W	C14 Inlet
SMX1500LCD	1500VA/900W	C14 Inlet
SMX1500LCDT	1500VA/900W	C14 Inlet
SMX1500SLT	1500VA/900W	C14 Inlet
SMX1500XLRT2U	1500VA/1350W	C14 Inlet
SMARTINT2200VS	2200VA/1600W	C20 Inlet
SMX2200XLRT2U	2200VA/1920W	C20 Inlet
SMX3000XLRT2UA	3000VA/2700W	C20 Inlet
SMX5000XLRT3U	5000VA/3750W	Hardwire

SmartOnline® On-Line UPS Systems

Model	Output Capacity	Input
SUINT1000LCD2U	1000VA/900W	C14 Inlet
SUINT1500LCD2U	1500VA/1350W	C14 Inlet
SUINT2200LCD2U	2200VA/1980W	C20 Inlet
SUINT3000LCD2U	3000VA/2700W	C20 Inlet
SU6000RT4UHV	6000VA/5400W	Hardwire
SU8000RT3UG	8000VA/7200W	Hardwire
SU10000RT3UG	10kVA/9kW	Hardwire
SU10KRT3UHV	10kVA/9kW	Hardwire

SmartOnline 3-Phase S3MX On-Line UPS Systems

Model	Output Capacity	Input
S3M30KX	30kVA/27kW	Hardwire
S3M40KX	40kVA/36kW	Hardwire
S3M60KX	60kVA/54kW	Hardwire
S3M80KX	80kVA/72kW	Hardwire
S3M100KX	100kVA/90kW	Hardwire
S3M120KX	120kVA/108kW	Hardwire
S3M160KX	160kVA/144kW	Hardwire
S3M200KX	200kVA/180kW	Hardwire

END-POINT UPS SYSTEMS



End-Point UPS Systems

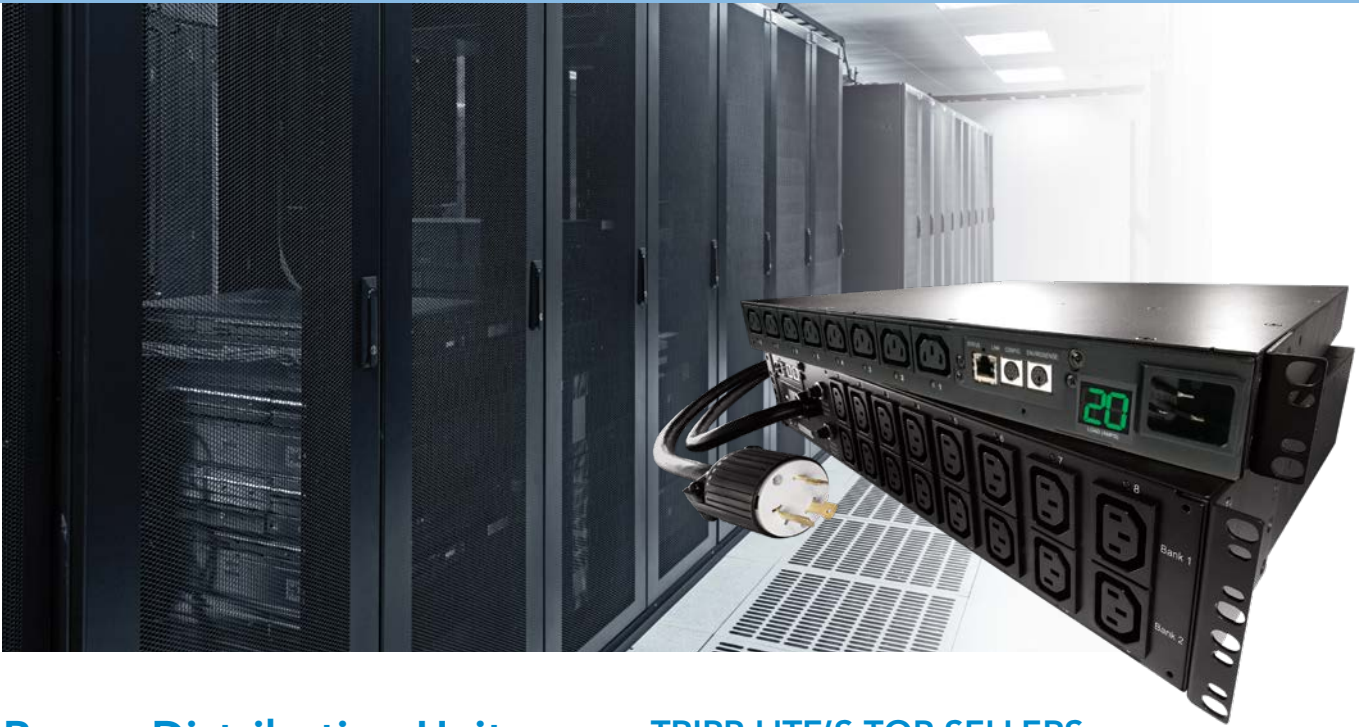
- Provide battery backup, voltage regulation and surge/noise protection for small servers, workstations, desktop computers and other electronics
- Support equipment through shorter outages and permit safe shutdown during longer blackouts
- Available with load capacities from 300 to 3000 VA
- Options include automatic voltage regulation (AVR), pure sine wave output, data line protection and LCD

TRIPP LITE'S TOP SELLERS

Compact Low-Profile UPS Systems

Model	Output Capacity	Input
AVRX550UD	550VA/300W	CEE 7/7 Schuko
AVRX750U	750VA/450W	C14 Inlet
OMNIVSX450	450VA/240W	C14 Inlet
OMNIVSX450D	450VA/240W	CEE 7/7 Schuko
OMNIVSX650	650VA/360W	C14 Inlet
OMNIVSX650D	650VA/360W	CEE 7/7 Schuko
OMNIVSX850	850VA/480W	C14 Inlet
OMNIVSX850D	850VA/480W	CEE 7/7 Schuko
OMNIVSINT1000	1000VA/500W	C14 Inlet
OMNIVSINT1500XL	1500VA/940W	C14 Inlet
OMNIVSX1000	1000VA/600W	C14 Inlet
OMNIVSX1000D	1000VA/600W	CEE 7/7 Schuko
OMNIVSX1500	1500VA/900W	C14 Inlet
OMNIVSX1500D	1500VA/900W	CEE 7/7 Schuko

POWER DISTRIBUTION UNITS (PDUs)



Power Distribution Units (PDUs)

- Single-phase and 3-phase models provide up to 48 outlets and 28.8 kW
- **Basic:** Reliable power distribution to multiple outlets
- **Metered:** Load meter(s) for local current monitoring
- **Monitored:** Network interface for remote management
- **Switched:** Network interface and remote individual outlet control
- **ATS:** Dual AC inputs and automatic transfer switch
- **Hot-Swap:** Live-replacement of UPS power without downtime

TRIPP LITE'S TOP SELLERS

Model	Capacity	Outlets
Basic PDUs		
PDUNV	1.6/3.8kW	14 (12 C13 + 2 C19)
PDU12IEC	1.6/3.8kW	14 (12 C13 + 2 C19)
PDUH32HV19	7.4kW	4 (C19)
Metered PDUs		
PDUMV16HV	3.8kW	38 (32 C13 + 6 C19)
PDUMV20HV	3.2-3.8kW	38 (32 C13 + 6 C19)
PDUMH32HV	7.4kW	18 (16 C13 + 2 C19)
PDUMV32HV	7.4kW	48 (40 C13 + 8 C19)
Monitored PDUs		
PDUMNV20HV2LX	3.3/3.7kW	20 (18 C13 + 2 C19)
PDUMNH32HV	7.4kW	16 (12 C13 + 4 C19)
PDUMNV32HV2LX	7.4kW	42 (36 C13 + 6 C19)
Switched PDUs		
PDUMH15HVNET	2.3-2.9kW	8 (C13)
PDUMH32HVNET	7.4kW	16 (C13)
PDUMV20HVNETLX	3.2-3.8kW	24 (20 C13 + 4 C19)
ATS PDUs		
PDUMH20HVATNET	3.2-3.8kW	10 (8 C13 + 2 C19)
PDUMH32HVAT	7.4kW	18 (16 C13 + 2 C19)
PDUMH32HVATNET	7.4kW	18 (16 C13 + 2 C19)
PDUMNH32HVAT	7.4kW	1 (IEC 309 32A Blue (2P+E))
Hot-Swap PDUs		
PDUBHV10	2-2.4kW	8 (C13)
PDUBHV20	3.2-3.8kW	8 (6 C13 + 2 C19)
3-Phase Metered PDUs		
PDU3XMV6G20	11.5kW	45 (36 C13 + 9 C19)
PDU3XMV6G32	22.2kW	42 (36 C13 + 6 C19)
3-Phase Monitored PDUs		
PDU3XVN3G16	11kW	36 (30 C13 + 6 C19)
PDU3XVN6G20	11.5kW	48 (42 C13 + 6 C19)
PDU3XVN10G16	11kW	36 (30 C13 + 6 C19)
3-Phase Switched PDUs		
PDU3XVSR3G16	11kW	24 (21 C13 + 3 C19)
PDU3XVSR6G20	11.5kW	30 (24 C13 + 6 C19)
PDU3XVSR6G32A	22.1kW	24 (12 C13 + 12 C19)
PDU3XVSR6G63B	27.6kW	30 (24 C13 + 6 C19)
PDU3XEVS6G63B	27.7kW	30 (24 C13 + 6 C19)

KVM SWITCHES & IP CONSOLE SERVERS



KVM Switches & IP Console Servers

- Control multiple servers and other devices from a single console (keyboard, mouse and monitor)
- KVM switches control up to 32 servers (select models are expandable)
- Options include a built-in LCD console that closes like a laptop and stores in a 1U drawer, IP remote access, multiuser capability and Cat5 cabling
- IP console servers provide in-band and out-of-band remote access to serial- and network-connected devices

TRIPP LITE'S TOP SELLERS

Model	Description
Basic KVMs	
B042-008	8-Port
B042-016	16-Port
Desktop KVMs	
B004-2DUA4-K	4-Port, Dual DVI/USB, Audio, Cables
B004-DP2UA2-K	2-Port, DisplayPort/USB, Audio, Cables
B004-DPUA4-K	4-Port, DisplayPort/USB, Audio, Cables
B004-DUA2-HR-K	2-Port, Dual DVI/USB, Audio, Cables
B004-VUA2-K-R	2-Port, VGA/USB, Audio, Cables
B006-VU4-R	4-Port, USB
Console KVMs	
B020-008-17	8-Port w/17 in. LCD
B020-U08-19-K	8-Port w/19 in. LCD and Cables
B020-U16-19-IP	16-Port w/19 in. LCD and IP
B020-U16-19-K	16-Port w/19 in. LCD and Cables
B040-008-19	8-Port w/19 in. LCD
B040-016-19	16-Port w/19 in. LCD
B070-016-19	16-Port w/19 in. LCD, 1+1, Cat5
B070-016-19-IP	16-Port w/19 in. LCD and IP, 1+1, Cat5
Console Servers	
B093-004-2E4U	4-Port Console Server, Dual GbE, Flash
B093-004-2E4U-V	4-Port Console Server, 4G LTE, Dual GbE, Flash
B093-008-2E4U	8-Port Console Server, Dual GbE, Flash
B093-008-2E4U-M	8-Port Console Server, Built-in Modem, Dual GbE, Flash
B098-016	16-Port Serial Console/Terminal Server
Rack Consoles	
B021-000-17	Console w/19 in. LCD
B021-000-19-HD	Console w/19 in. LCD, DVI to VGA Adapter
IP Remote Access & Multiuser KVMs	
B022-U08-IP	8-Port w/IP
B022-U16-IP	16-Port w/IP
B030-008-17-IP	8-Port w/IP, 17 in. LCD
B072-008-1-IP	8-Port w/IP, 1+1, Cat5
B072-032-IP2	32-Port w/IP, 2+1, Cat5
Secure KVM	
B002-DP1A4	4-Port, DisplayPort, NIAP-Certified

FLOOR-STANDING RACKS



Floor-Standing Racks

SmartRack® Enclosures

- Euro-Series Racks available from 42U to 47U
- Sizes from 12U to 48U
- EIA-standard mounting rails
- Sturdy steel frame supports up to 1,360 kg
- Toolless mounting for vertical PDUs
- Options include wider cabinets, deeper or shallower cabinets, clear acrylic “glass” window/door, colocation cabinets, NEMA cabinets, seismic cabinets, expansion cabinets without side panels, compact cabinets for smaller spaces and shock pallet packaging for shipping with equipment installed

SmartRack Open Frame Racks

- 12U to 45U 2-post racks
- 12U to 58U 4-post racks
- Sturdy metal frame supports up to 1,360 kg (varies by model)
- Toolless mounting for vertical PDUs

TRIPP LITE'S TOP SELLERS

Floor-Standing Racks			
Model	Rack Size	Type	Load Capacity
SR12UB	12U	Standard Enclosure	453 kg
SRX12UBFFD	12U	Rated for Harsh Environments	453 kg
SR18UB	18U	Standard Enclosure	453 kg
SR24UB	24U	Standard Enclosure	453 kg
SR25UB	25U	Standard Enclosure	1360 kg
SR2400	42U	Value Series Enclosure	1089 kg
SRQP42UB	42U	Noise Reduction Enclosure	1089 kg
SR2POST	45U	2-Post Open Frame	363 kg

Euro-Series Floor-Standing Rack Enclosures			
Model	Rack Size	Type	Load Capacity
SRX42UB	42U	Standard	1360 kg
SRX42UBDP	42U	Extra Deep	1360 kg
SRX42UBDPEXP	42U	Extra Deep, Expandable	1360 kg
SRX42UBDPWD	42U	Extra Deep and Wide	1360 kg
SRX42UBDPWDEXP	42U	Extra Deep and Wide, Expandable	1360 kg
SRX42UBEXP	42U	Expandable	1360 kg
SRX42UBWD	42U	Extra Wide	1360 kg
SRX42UBWDEXP	42U	Extra Wide, Expandable	1360 kg
SRX47UB	47U	Standard	1360 kg
SRX47UBDP	47U	Extra Deep	1360 kg
SRX47UBDPEXP	47U	Extra Deep, Expandable	1360 kg
SRX47UBDPWD	47U	Extra Deep and Wide	1360 kg
SRX47UBEXP	47U	Extra Deep and Wide, Expandable	1360 kg
SRX47UBWD	47U	Extra Wide	1360 kg
SRX47UBWDEXP	47U	Extra Wide, Expandable	1360 kg



Shipping Cases		
Model	Size	Capacity
SRCASE2U	2U	23 kg
SRCASE4U	4U	34 kg
SRCASE6U	6U	45 kg
SRCASE10U	10U	68 kg

PRODUCTS

WALL-MOUNT RACKS



Wall-Mount Racks

- Sizes from 2U to 26U
- Sturdy steel frame supports up to 227 kg (varies by model)
- Hinged back for easier service access (select models)
- Variety of depths optimized for equipment ranging from shallow patch panels to deep 1U servers
- Open frame racks from 2U to 22U

TRIPP LITE'S TOP SELLERS

Wall-Mount Rack Enclosures			
Model	Rack Size	Type	Load Capacity
SRWF2U36	2U	Vertical, Server Depth	68 kg
SRWF4U	4U	Vertical, Switch Depth	68 kg
SRWF5U	5U	Vertical, Switch Depth	68 kg
SRWF6U36	6U	Vertical, Switch Depth	68 kg
SRW6U	6U	Switch Depth	91 kg
SRW9U	9U	Switch Depth	91 kg
SRW10US	10U	Swinging Hinge, Switch Depth	91 kg
SRW12U	12U	Switch Depth	91 kg
SRWF12U38	12U	Vertical, Server Depth	181 kg
SRW15US	15U	Swinging Hinge	91 kg
SRWF16U38	16U	Vertical, Server Depth	181 kg
SRW18UHD	18U	Heavy Duty, Side Mount	227 kg
SRW26US	26U	Swinging Hinge, Switch Depth	113 kg

Wall-Mount Open Frame Racks			
Model	Rack Size	Type	Load Capacity
SRWO12UHD	12U	Low Profile, Switch Depth	91 kg
SRWO8U22	8U/ 12U/ 22U	Expandable	68 kg

CHARGING STATIONS & CARTS



Charging Stations & Carts

- Charge, sync, secure and organise up to 36 laptops or 48 tablets
- Suitable for education, healthcare, retail, commercial, industrial and office settings

FAST CHARGING/SYNCING

- USB: Up to 2.4A per device, plus syncing
- AC: Dedicated outlet for each device

EASY ORGANISATION

- Removable device dividers
- Integrated cord management
- Slots hold laptops up to 43 cm

COMPREHENSIVE PROTECTION

- Locking steel enclosure
- Flow-through ventilation

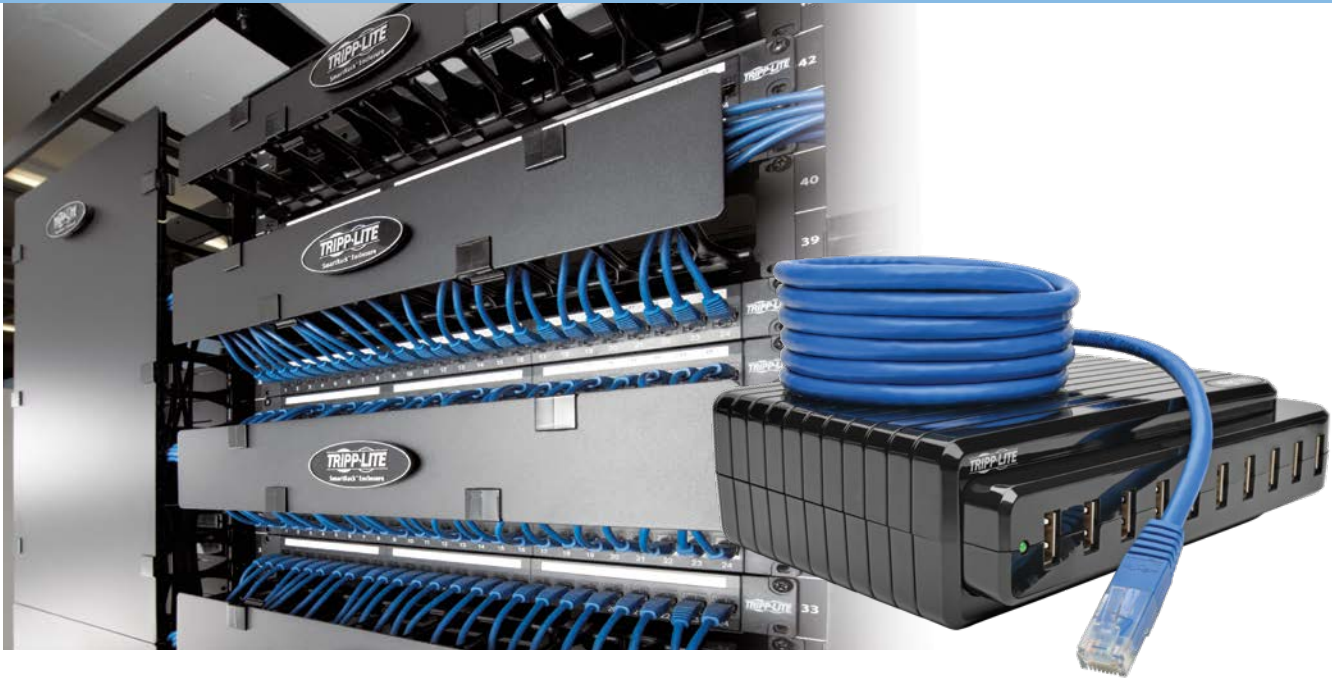
FLEXIBLE DEPLOYMENT

- Mobile cart or station with cart option
- Optional wall/desk/table mounting
- Black or white powder-coated finish

TRIPP LITE'S TOP SELLERS

Model	Description
Charging Stations	
CS16USB	16-Port USB Charging Station, Black
CS16USBW	16-Port USB Charging Station, White
CS48USB	48-Port USB Charging Station, Black
CS48USBW	48-Port USB Charging Station, White
Charging Carts	
CSC32USB	32-Port USB Charging Cart
CSCXB36AC	36-Port AC Charging Cart, BS 1363 Input
CSCXS36AC	36-Port AC Charging Cart, Schuko CEE 7/7 Input
USB Charging Solutions	
U280-001-C2	USB Tablet/Phone Car Charger, 5V 2.4A/12W
U280-002-C12	Dual USB Tablet/Phone Car Charger, 5V 3.1A/15.5W
U280-004	4-Port USB Charging Station, 5V 6A/30W
U280-004-OTG	4-Port USB Charging Station with OTG Hub, 5V 6A/30W
U280-004-UK	4-Port USB Charging Station, 5V 6A/30W, BS 1363 Input
U280-007-CQC-ST	7-Port USB Charging Station, Device Storage, 5V 4A/60W
U280-010	10-Port USB Charging Station, 5V 21A/105W
U280-010-ST	10-Port USB Charging Station, Device Storage, 12V 8A/96W
U280-010-ST-CEE	10-Port USB Charging Station, Device Storage, 12V 8A/96W, Schuko CEE 7/7 Input
U280-016-RM	16-Port USB Charging Station, 5V 40A/200W
U280-016-RMINT	16-Port USB Charging Station, 5V 40A/200W, C14 Inlet
U280-032-RMINT	32-Port USB Charging Station, 5V 80A/400W, C14 Inlet

CABLES & CONNECTIVITY



Cables & Connectivity

- Copper and fibre network cables up to 300 m with a wide range of connectors including RJ45, LC, SC, ST and more
- USB cabling from 15 cm to 20 m, with USB-A, USB-C, Micro-B, Mini-B and Lightning connectors
- USB-C Docking Stations and Hubs with as many as 10 USB ports

TRIPP LITE'S TOP SELLERS

Cat6 550 MHz Molded Patch Cables (Snagless)

Colour/Length	.3 m (1 ft.)	.6 m (2 ft.)	1 m (3 ft.)	1.5 m (5 ft.)	1.8 m (6 ft.)
Black	N201-001-BK	N201-002-BK	N201-003-BK	N201-005-BK	N201-006-BK
Blue	N201-001-BL	N201-002-BL	N201-003-BL	N201-005-BL	N201-006-BL
Gray	N201-001-GY	N201-002-GY	N201-003-GY	N201-005-GY	N201-006-GY
Green	N201-001-GR	N201-002-GR	N201-003-GR	N201-005-GR	N201-006-GR
Orange	N201-001-OR	N201-002-OR	N201-003-OR	N201-005-OR	N201-006-OR
Red	N201-001-RD	N201-002-RD	N201-003-RD	N201-005-RD	N201-006-RD
White	N201-001-WH	N201-002-WH	N201-003-WH	N201-005-WH	N201-006-WH
Yellow	N201-001-YW	N201-002-YW	N201-003-YW	N201-005-YW	N201-006-YW
Colour/Length	2 m (7 ft.)	3 m (10 ft.)	4.3 m (14 ft.)	4.6 m (15 ft.)	7.6 m (25 ft.)
Black	N201-007-BK	N201-010-BK	N201-014-BK	N201-015-BK	N201-025-BK
Blue	N201-007-BL	N201-010-BL	N201-014-BL	N201-015-BL	N201-025-BL
Gray	N201-007-GY	N201-010-GY	N201-014-GY	N201-015-GY	N201-025-GY
Green	N201-007-GR	N201-010-GR	N201-014-GR	N201-015-GR	N201-025-GR
Orange	N201-007-OR	N201-010-OR	N201-014-OR	N201-015-OR	N201-025-OR
Red	N201-007-RD	N201-010-RD	N201-014-RD	N201-015-RD	N201-025-RD
White	N201-007-WH	N201-010-WH	N201-014-WH	N201-015-WH	N201-025-WH
Yellow	N201-007-YW	N201-010-YW	N201-014-YW	N201-015-YW	N201-025-YW

Cat5e 350 MHz Molded Patch Cables

Colour/Length	.3 m (1 ft.)	1 m (3 ft.)	1.5 m (5 ft.)	1.8 m (6 ft.)
Gray	N002-001-GY	N002-003-GY	N002-005-GY	N002-006-GY
Blue	N002-001-BL	N002-003-BL	N002-005-BL	N002-006-BL
Black	N002-001-BK	N002-003-BK	N002-005-BK	N002-006-BK
Green	N002-001-GN	N002-003-GN	N002-005-GN	N002-006-GN
Red	N002-001-RD	N002-003-RD	N002-005-RD	N002-006-RD
Yellow	N002-001-YW	N002-003-YW	N002-005-YW	N002-006-YW
White	N002-001-WH	N002-003-WH	N002-005-WH	N002-006-WH
Colour/Length	2 m (7 ft.)	3 m (10 ft.)	4.3 m (14 ft.)	7.6 m (25 ft.)
Gray	N002-007-GY	N002-010-GY	N002-014-GY	N002-025-GY
Blue	N002-007-BL	N002-010-BL	N002-014-BL	N002-025-BL
Black	N002-007-BK	N002-010-BK	N002-014-BK	N002-025-BK
Green	N002-007-GN	N002-010-GN	N002-014-GN	N002-025-GN
Red	N002-007-RD	N002-010-RD	N002-014-RD	N002-025-RD
Yellow	N002-007-YW	N002-010-YW	N002-014-YW	N002-025-YW
White	N002-007-WH	N002-010-WH	N002-014-WH	N002-025-WH

TRIPP LITE'S TOP SELLERS

Cat5e Outdoor Rated Patch Cables				
Colour/Length	15.2 m (50 ft.)		30 m (100 ft.)	
Gray	N007-050-GY		N007-100-GY	
Singlemode Duplex Fibre Optic Patch Cables (9/125µm)				
Connector	ST		SC	
SC (1 m)	N354-01M		N356-01M	
SC (2 m)	N354-02M		N356-02M	
SC (3 m)	N354-03M		N356-03M	
SC (5 m)	N354-05M		N356-05M	
ST (2 m)	N352-02M		N354-02M	
LC (2 m)	N368-02M		N366-02M	
LC (5 m)	N368-05M		N366-05M	
Multimode Duplex OM1 Fibre Optic Cables (62.5/125µm)				
Connector	ST	SC	MTRJ	LC
ST (1 m)	N302-003	N304-003	N308-003	N318-01M
ST (2 m)	N302-006	N304-006	N308-006	N318-02M
ST (3 m)	N302-010	N304-010	N308-010	N318-03M
ST (10 m)	N302-10M	N304-10M	—	N318-10M
SC (1 m)	N304-003	N306-003	N310-003	N316-01M
SC (2 m)	N304-006	N306-006	N310-006	N316-02M
SC (3 m)	N304-010	N306-010	N310-010	N316-03M
SC (5 m)	N304-05M	N306-05M	N310-05M	N316-05M
SC (6 m)	N304-06M	—	—	N316-06M
LC (1 m)	N318-01M	N316-01M	N314-01M	N320-01M
LC (2 m)	N318-02M	N316-02M	N314-02M	N320-02M
LC (3 m)	N318-03M	N316-03M	N314-03M	N320-03M
LC (5 m)	N318-05M	N316-05M	N314-05M	N320-05M
LC (10 m)	N318-10M	N316-10M	—	N320-10M
LC (15 m)	N318-15M	N316-15M	N314-15M	N320-15M
Duplex Aqua OM3 Fibre Optic Patch Cables (50/125µm)				
Connector	SC	LC		ST
SC (3 m)	N806-03M	N816-03M		—
SC (10 m)	N806-10M	N816-10M		—
SC (15 m)	N806-15M	N816-15M		N818-15M
LC (1 m)	N816-01M	N820-01M		N818-01M
LC (2 m)	N816-02M	N820-02M		N818-02M
LC (3 m)	N816-03M	N820-03M		N818-03M
LC (5 m)	N816-05M	N820-05M		N818-05M
LC (10 m)	N816-10M	N820-10M		N818-10M
LC (15 m)	N816-15M	N820-15M		N818-15M
Cat6/5e Patch Panels				
Cat5e	Cat6	Description		
N050-012	N250-012	Wall-Mount Patch Panel 568B - 12 Ports		
N052-012	N252-012	Patch Panel 568B - 12 Ports		
N052-024	N252-024	Patch Panel 568B - 24 Ports		
N052-048	N252-048	Patch Panel 568B - 48 Ports		
USB Cables				
Model	Description			
U005-10I	USB Extension Cable, Right-Angle, A (M/F), 25.4 cm (10 in.)			
U022-006	USB 2.0 A to B Gold Cable, (M/M), 1.8 m (6 ft.)			
U022-010	USB 2.0 A to B Gold Cable, (M/M), 3 m (10 ft.)			
U022-015	USB 2.0 A to B Gold Cable, (M/M), 4.6 m (15 ft.)			
U024-006	USB Gold Extension Cable for USB 2.0 Cables, A (M/F), 1.8 m (6 ft.)			
U024-010	USB Gold Extension Cable for USB 2.0 Cables, A (M/F), 3 m (10 ft.)			
U026-016	USB 2.0 Active Extension Cable, A (M/F), 4.9 m (16 ft.)			
U026-10M	USB 2.0 Active Extension Cable, A (M/F), 10 m (33 ft.)			
U026-20M	USB 2.0 Active Extension Cable, A (M/F), 20 m (65 ft.)			
U030-006	USB 2.0 A to 5-Pin Mini B Gold Cable, (M/M), 1.8 m (6 ft.)			
U042-025	USB 2.0 A to B Cable, (M/M), 7.6 m (25 ft.)			
U042-036	USB 2.0 A to B Cable, (M/M), 11 m (36 ft.)			
U042-050	USB 2.0 A to B Cable, (M/M), 15.2 m (50 ft.)			
U050-003	USB 2.0 A to Micro-USB B Device Cable, 1 m (3 ft.)			
U050-006	USB 2.0 A to Micro-USB B Device Cable, 1.8 m (6 ft.)			
U209-006-RJ45-X	USB A to RJ45 Rollover Cable, M/M, 1.8 m (6 ft.)			

CABLES & CONNECTIVITY

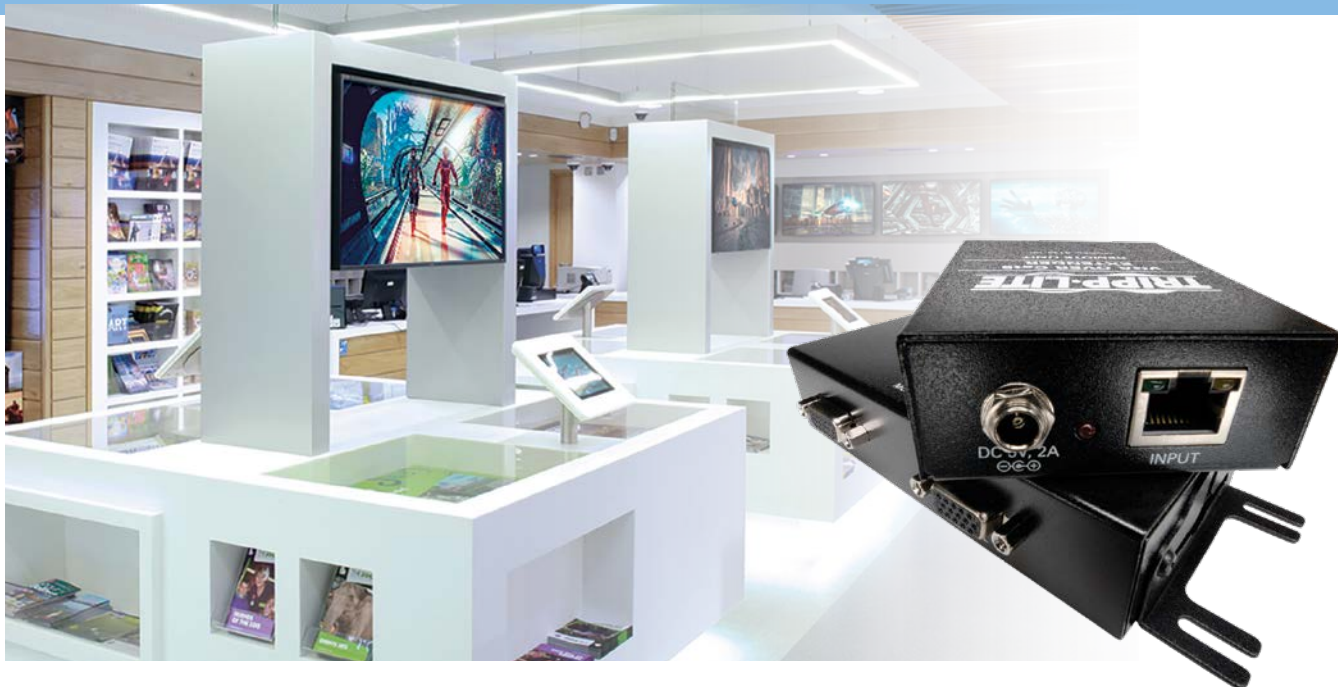
TRIPP LITE'S TOP SELLERS

USB Adapters	
Model	Description
B015-000	USB 2.0 A to PS/2 Adapter (M/2 x F)
USA-19HS	High-Speed Serial to USB Adapter, (M/M)
USA-49WG	High-Speed 4 x Serial to USB Adapter, (M/M)
U209-000-R	USB 2.0 A to Serial Adapter, (M/M), 1.5 m (5 ft.)
U209-006-RJ45-X	USB 2.0 A to RJ45 Rollover Cable, (M/M), 1.8 m (6 ft.)
U219-000-R	USB A to PS/2 Adapter, (M/2 x F)
U236-000-R	USB 2.0 A to RJ45 Ethernet Adapter, (M/F)
U236-000-GBW	USB 2.0 A to RJ45 Ethernet Adapter, (M/F), White
U336-000-R	USB 3.0 A to RJ45 Ethernet Adapter, (M/F)
U336-U03-GB	USB 3.0 A to RJ45 Ethernet + 3 x USB-A Adapter, (M/F/3xF)
U339-000	USB 3.0/SATA Hard Drive Quick Dock
U339-002	USB 3.0/Dual SATA Hard Drive Docking Station with Cloning
U344-001-HD-4K	USB 3.0 A to HDMI Dual Monitor 4K Graphics Card Adapter, (M/F)
U344-001-HDMI-R	USB 3.0 A to HDMI Dual Monitor Adapter, (M/F)
U344-001-VGA	USB 3.0 A to VGA Monitor Adapter, (M/F)
U357-025-UASP	USB 3.0/SATA Hard Drive Enclosure

USB-C Adapters	
Model	Description
U444-06N-D-C	USB-C to DVI (M/F), Power Delivery
U444-06N-DVI-AM	USB-C to DVI (M/F)
U444-06N-DP4K6B	USB-C to 4K DisplayPort (M/F), Black
U444-06N-DP-AM	USB-C to 4K DisplayPort (M/F)
U444-06N-DP-C	USB-C to 4K DisplayPort (M/F), Power Delivery
U444-06N-H4-C	USB-C to 4K HDMI (M/F), Power Delivery
U444-06N-HD	USB-C to HDMI (M/F)
U444-06N-HD4K6B	USB-C to 4K HDMI (M/F), Black
U444-06N-HD-AM	USB-C to 4K HDMI (M/F)
U444-06N-HDV4K	USB-C to HDMI/DVI/VGA (M/F)
U444-06N-HV4K	USB-C to 4K HDMI/VGA (M/F)
U444-06N-V-C	USB-C to VGA (M/F), Power Delivery
U444-06N-VGA	USB-C to VGA (M/F)
U444-06N-VGA-AM	USB-C to VGA (M/F), DisplayPort Alternate Mode

USB-C Docking Stations	
Model	Description
U442-DOCK1	USB-C to 4K HDMI, VGA, DP/mDP, USB-A, Ethernet, 3.5 mm, Card Reader, PD, Silver
U442-DOCK1-B	USB-C to 4K HDMI, VGA, DP/mDP, USB-A, Ethernet, 3.5 mm, Card Reader, PD, Black
U444-06N-DGU-C	USB-C to DVI, USB-A, Ethernet, PD, White
U444-06N-DGUB-C	USB-C to DVI, USB-A, Ethernet, PD, Black
U444-06N-DU-C	USB-C to DVI, USB-A, PD, White
U444-06N-DUB-C	USB-C to DVI, USB-A, PD, Black
U444-06N-H4GU-C	USB-C to 4K HDMI, USB-A, Ethernet, PD, White
U444-06N-H4GUBC	USB-C to 4K HDMI, USB-A, Ethernet, PD, Black
U444-06N-H4U-C	USB-C to 4K HDMI, USB-A, PD, White
U444-06N-HGU-C	USB-C to HDMI, USB-A, Ethernet, PD, White
U444-06N-HGUB-C	USB-C to HDMI, USB-A, Ethernet, PD, Black
U444-06N-HU-C	USB-C to HDMI, USB-A, PD, White
U444-06N-VGU-C	USB-C to VGA, USB-A, Ethernet, PD, White
U444-06N-VGUB-C	USB-C to VGA, USB-A, Ethernet, PD, Black
U444-06N-VU-C	USB-C to VGA, USB-A, PD, White

DISPLAY & DIGITAL SIGNAGE SOLUTIONS



Display & Digital Signage Solutions

- Connect high-resolution video sources to displays and projectors up to 610 m away with direct-connect cables, extenders, wall plates, adapters, splitters and switches
- Solutions are available with a wide variety of connectors, including DVI, VGA, HDMI, Micro-HDMI, Mini-HDMI, DisplayPort, Mini DisplayPort, USB and audio

TRIPP LITE'S TOP SELLERS

Model	Description
VGA Extenders	
B130-101-2	VGA over Cat5 Extender Kit
B130-101A-2	VGA + Audio over Cat5 Extender Kit
B130-101-U	VGA over Cat5 Extender Kit, USB Powered
B132-004-2	VGA over Cat5 Extender, 4-Port Transmitter
B132-004A-2	VGA + Audio over Cat5 Extender, 4-Port Transmitter
B132-100-1	VGA over Cat5 Receiver
B132-100A	VGA + Audio over Cat5 Receiver
VGA Switches & Splitters	
B112-002-R	VGA/SVGA 2 Position Switch, 3 x HD15 F
B114-002-R	VGA/SVGA Video Splitter, 2-Port, HD15 M/2xF
B114-004-R	VGA/SVGA Video Splitter, 4-Port, HD15 M/4xF
VGA Cables	
P500-010	SVGA Monitor Extension Gold Cable w/RGB coax (M/F), 3 m (10 ft.)
P500-025	SVGA Monitor Extension Gold Cable w/RGB coax (M/F), 7.6 m (25 ft.)
P500-050	SVGA Monitor Extension Gold Cable w/RGB coax (M/F), 15.2 m (50 ft.)
P502-001	SVGA/VGA Monitor Cable w/ RGB Coax (M/M), .3 m (1 ft.)
P502-003	SVGA/VGA Monitor Cable w/ RGB Coax (M/M), 1 m (3 ft.)
P502-006	SVGA Monitor Gold Cable w/RGB Coax (M/M), 1.8 m (6 ft.)
P502-010	SVGA Monitor Gold Cable w/RGB Coax (M/M), 3 m (10 ft.)
P502-015	SVGA Monitor Gold Cable w/RGB Coax (M/M), 4.6 m (15 ft.)
P502-100	SVGA Monitor Gold Cable w/RGB Coax (M/M), 30 m (100 ft.)
P504-010	SVGA/VGA Monitor Cable w/Built-In Audio Connectors (M/M), 3 m (10 ft.)
P504-015	SVGA/VGA Gold Monitor Cable + Audio with RGB Coax, (M/M), 3.5 mm (M/M), 4.6 m (15 ft.)
P504-025	SVGA/VGA Gold Monitor Cable + Audio with RGB Coax, (M/M), 3.5 mm (M/M), 7.6 m (25 ft.)
P504-050	SVGA/VGA Gold Monitor Cable + Audio with RGB Coax, (M/M), 3.5 mm (M/M), 15.2 m (50 ft.)

DISPLAY & DIGITAL SIGNAGE SOLUTIONS

TRIPP LITE'S TOP SELLERS

Model	Description
HDMI Extenders	
B122-000	HDMI Signal Extender, HDMI F/F (1080p @ 24Hz)
B122-000-60	HDMI Signal Extender, HDMI F/F (1080p @ 60Hz)
B125-150	HDMI over Dual Cat5 Extender
B125-101-60-IRU	HDMI over Dual Cat5 Extender Kit, IR Control
B126-002-INT	HDMI over Cat5 Extender/Splitter, 2-Port
B126-004-INT	HDMI over Cat5 Extender/Splitter, 4-Port
B126-1A1	HDMI over Cat5 Active Extender Kit
B126-1P0	HDMI over Cat5 Passive Extender Remote Unit
HDMI Adapters	
P130-06N-DP-V2	HDMI to DisplayPort Adapter, (M/F), 15.2 cm (6 in.)
P131-000	HDMI to VGA Adapter, (M/F)
P131-06N	HDMI to VGA Adapter, (M/F), 15.2 cm (6 in.)
P132-08N	HDMI to DVI Adapter, (M/F), 20.3 cm (8 in.)
HDMI Cables	
P566-006	HDMI to DVI Gold Digital Video Cable, HDMI-M/DVI-M, 1.8 m (6 ft.)
P566-010	HDMI to DVI Gold Digital Video Cable HDMI-M/DVI-M, 3 m (10 ft.)
P568-003	High-Speed 4K HDMI Gold Cable, 1 m (3 ft.)
P568-006	High-Speed 4K HDMI Gold Cable, 1.8 m (6 ft.)
P568-010	High-Speed 4K HDMI Gold Cable, 3 m (10 ft.)
P568-025	High-Speed 4K HDMI Gold Cable, 7.6 m (25 ft.)
P568-035	High-Speed 4K HDMI Gold Cable, 10.7 m (35 ft.)
P568-050	High-Speed 4K HDMI Gold Cable, 15.2 m (50 ft.)
P568-100	High-Speed 4K HDMI Gold Cable, 30 m (100 ft.)
P569-003	High-Speed 4K HDMI Cable with Ethernet, (M/M), 1 m (3 ft.)
P569-006	High-Speed 4K HDMI Cable with Ethernet, (M/M), 1.8 m (6 ft.)
P569-010	High-Speed 4K HDMI Cable with Ethernet, (M/M), 3 m (10 ft.)
P569-020	High-Speed 4K HDMI Cable with Ethernet, (M/M), 6 m (20 ft.)
P569-025	High-Speed 4K HDMI Cable with Ethernet, (M/M), 7.6 m (25 ft.)
DVI Adapters	
P120-000	DVI to VGA Adapter, (M/F)
P130-000	HDMI to DVI Adapter, (F/M)
P132-000	DVI to HDMI Adapter, (F/M)
P134-000	DisplayPort to DVI Adapter (M/F), 15.2 cm (6 in.)
DVI Cables	
P560-003	DVI Dual Link TMDS Cable, (M/M), 1 m (3 ft.)
P560-006	DVI Dual Link TMDS Cable, (M/M), 1.8 m (6 ft.)
P560-010	DVI Dual Link TMDS Cable, (M/M), 3 m (10 ft.)
P560-015	DVI Dual Link TMDS Cable, (M/M), 4.6 m (15 ft.)
P560-020	DVI Dual Link TMDS Cable - (M/M), 6 m (20 ft.)
P560-025	DVI Dual Link TMDS Cable - (M/M), 7.6 m (25 ft.)
P560-050	DVI Dual Link TMDS Cable - (M/M), 15.2 m (50 ft.)
P561-003	DVI Single Link TMDS Cable, (M/M), 1 m (3 ft.)
P561-006	DVI Single Link TMDS Cable, (M/M), 1.8 m (6 ft.)
P561-010	DVI Single Link TMDS Cable - (M/M), 3 m (10 ft.)
DisplayPort Adapters	
P134-000	DisplayPort to DVI Cable Adapter, (M/F)
P134-06N-VGA	DisplayPort to VGA Active Cable Adapter, (M/F), 15.2 cm (6 in.)
P134-06N-VGA-V2	DisplayPort 1.2 to VGA Active Cable Adapter, (M/F), 15.2 cm (6 in.)
P136-000	DisplayPort to HDMI Convertor, (M/F), 15.2 cm (6 in.)
P136-06N-HV-V2	DisplayPort 1.2 to HDMI/VGA Adapter, (M/F/F), 15.2 cm (6 in.)
P137-06N-DVI	Mini DisplayPort to DVI Adapter, (M/F), 15.2 cm (6 in.)
P137-06N-HDV	Mini DisplayPort to HDMI/DVI/VGA Adapter, (M/F/F/F), 15.2 cm (6 in.)
P137-06N-VGA	Mini DisplayPort to VGA Active Adapter, (M/F), 15.2 cm (6 in.)
DisplayPort Cables	
P580-003	DisplayPort Cable with Latches, (M/M), 1 m (3 ft.)
P580-006	DisplayPort Cable with Latches, (M/M), 1.8 m (6 ft.)
P580-010	DisplayPort Cable with Latches, (M/M), 3 m (10 ft.)
P580-015	DisplayPort Cable with Latches, (M/M), 4.6 m (15 ft.)
P580-020	DisplayPort Cable with Latches, (M/M), 6 m (20 ft.)
P580-025	DisplayPort Cable with Latches, (M/M), 7.6 m (25 ft.)
P580-050	DisplayPort Cable with Latches, (M/M), 15.2 m (50 ft.)
P581-006	DisplayPort to DVI Cable, (M/M), 1.8 m (6 ft.)
P581-006-V2	DisplayPort to DVI Active Adapter Cable, (M/M), 1.8 m (6 ft.)
P581-006-VGA	DisplayPort to VGA Active Adapter Cable, (M/M), 1.8 m (6 ft.)
P581-010	DisplayPort to DVI-D Single Link Adapter, (M/M), 3 m (10 ft.)
P582-006	DisplayPort to HDMI Adapter Cable, (M/M), 1.8 m (6 ft.)
P582-010	DisplayPort to DVI Cable, (M/M), 3 m (10 ft.)
P582-025	DisplayPort to HDMI Adapter Cable, (M/M), 7.6 m (25 ft.)
P586-006-DVI	Mini DisplayPort to DVI Cable Adapter, (M/M), 1.8 m (6 ft.)
P586-006-DVI-V2	Mini DisplayPort 1.2 to DVI Cable Adapter, 1.8 m (6 ft.)
P586-006-HDMI	Mini DisplayPort to HDMI Cable Adapter, (M/M), 1.8 m (6 ft.)
P586-012-HDMI	Mini DisplayPort to HDMI Cable Adapter, (M/M), 3.7 m (12 ft.)

DISPLAY MOUNTS



Display Mounts

- Save space and improve viewing angles for virtually any type of flat-panel screen, including computer monitors, HDTVs, laptops, tablets and projectors
- Wall, desk, floor and ceiling mounts, plus mobile floor stand models
- Fixed, tilting or full-motion adjustment options
- VESA-compliant mounting-hole patterns for easy compatibility
- Support displays up to 254 cm and 159 kg



TRIPP LITE'S TOP SELLERS

Model	Type	Supported Screen Size	Weight Capacity
Display Mounts			
DMR1024X2	Dual Display Rail Wall Mount	2 x 25.4 - 61 cm (10 - 24 in.)	2 x 8 kg (18 lb.)
DWF1327M	Fixed Wall Mount	33 - 68.5 cm (13 - 27 in.)	40 kg (88 lb.)
DWF2655X	Fixed Wall Mount	66 - 139.7 cm (26 - 55 in.)	75 kg (165 lb.)
DWF3270X	Fixed Wall Mount	81.2 - 178 cm (32 - 70 in.)	75 kg (165 lb.)
DWF3770L	Fixed Wall Mount	94 - 178 cm (37 - 70 in.)	65 kg (143 lb.)
DWFSC3780MUL	Fixed Security Wall Mount	94 - 203.2 cm (37 - 80 in.)	40/100 kg (88/200 lb.)
DWF4585X	Fixed Wall Mount	114.3 - 215.9 cm (45 - 85 in.)	91 kg (200 lb.)
DWF60100XX	Fixed Wall Mount	152.4 - 254 cm (60 - 100 in.)	159 kg (350 lb.)
DWM1327SE	Swivel/Tilt Wall Mount	33 - 68.5 cm (13 - 27 in.)	15 kg (33 lb.)
DWM1327SP	Swivel/Tilt Wall Mount with Screen Adjustment	33 - 68.5 cm (13 - 27 in.)	15 kg (33 lb.)
DWM1742MA	Swivel/Tilt Wall Mount with Arms	43.2 - 106.7 cm (17 - 42 in.)	35 kg (77 lb.)
DWM1742MN	Swivel/Tilt Wall Mount with Screen Adjustment	43.2 - 106.7 cm (17 - 42 in.)	52 kg (115 lb.)
DWM2655M	Swivel/Tilt Wall Mount	66 - 139.7 cm (26 - 55 in.)	50 kg (110 lb.)
DWM3750S	Swivel/Tilt Wall Mount	94 - 127 cm (37 - 50 in.)	18 kg (40 lb.)
DWM3770PLX	Swivel/Tilt Wall Mount, Rotatable	94 - 178 cm (37 - 70 in.)	50 kg (110 lb.)
DWM3770X	Swivel/Tilt Wall Mount	94 - 178 cm (37 - 70 in.)	75 kg (165 lb.)
DWMSC3780MUL	Full-Motion Security Wall Mount	94 - 203.2 cm (37 - 80 in.)	45/91 kg (88/200 lb.)
DWM60100XX	Swivel/Tilt Wall Mount	152.4 - 254 cm (60 - 100 in.)	125 kg (275 lb.)
DWT1327S	Tilt Wall Mount	33 - 68.5 cm (13 - 27 in.)	40 kg (88 lb.)
DWT2655XP	Tilt Wall Mount, Low Profile	66 - 139.7 cm (26 - 55 in.)	75 kg (165 lb.)
DWT3270X	Tilt Wall Mount	81.2 - 178 cm (32 - 70 in.)	75 kg (165 lb.)
DWT3770X	Tilt Wall Mount	94 - 178 cm (37 - 70 in.)	91 kg (200 lb.)
DWTSC3780MUL	Tilt Security Wall Mount	94 - 203.2 cm (37 - 80 in.)	45/91 kg (88/200 lb.)
DWT4585X	Tilt Wall Mount	114.3 - 215.9 cm (45 - 85 in.)	91 kg (200 lb.)
DWT60100XX	Tilt Wall Mount, UL Certified	152.4 - 254 cm (60 - 100 in.)	159 kg (350 lb.)
Mobile Floor Stands			
DMCS3270XP	Mobile Flat-/Curved-Panel Floor Stand	81.2 - 178 cm (32 - 70 in.)	68 kg (150 lb.)
DMCS3770L	Mobile Flat-Panel Floor Stand	94 - 178 cm (37 - 70 in.)	40 kg (88 lb.)
DMCS60100XX	Mobile Flat-/Curved-Panel Floor Stand	152.4 - 254 cm (60 - 100 in.)	100 kg (220 lb.)

PRODUCTS

HEALTHCARE SOLUTIONS



Healthcare Solutions

- Power protection, power supply and regulatory compliance solutions for use in hospitals and other healthcare facilities worldwide
- Support a wide range of equipment and applications both inside and outside patient care vicinities

TRIPP LITE'S TOP SELLERS

Model	Description
Medical-Grade Power Strips	
PS410HGUK	4 Hospital-Grade Outlets, 3m Cord
PS610HGUK	6 Hospital-Grade Outlets, 3m Cord
Medical-Grade UPS Systems	
OMNIX350HG	350VA/225W, 6 Hospital-Grade Outlets
SMX700HG	700VA/450W, 6 Hospital-Grade Outlets
SMX700HGL	700VA/450W, 6 Hospital-Grade Outlets, Lithium Battery
SMX1200XLHG	1000VA/750W, 6 Hospital-Grade Outlets
SMX1200XLHGL	1000VA/750W, 6 Hospital-Grade Outlets, Lithium Battery
Medical-Grade Mobile Power	
HCRK-INT	300W, 12VDC, 1 Outlet
HNINT350SNR	350W, 12VDC, 1 Outlet
HCINT150SL	150W, 12VDC, 1 Outlet
Medical-Grade Isolation Transformers	
IS300HGDV	300W, 4 Hospital-Grade Outlets
IS600HGDV	600W, 6 Hospital-Grade Outlets
IS1000HGDV	1000W, 8 Hospital-Grade Outlets
IS1800HGDV	1800W, 8 Hospital-Grade Outlets

STANDING DESK SOLUTIONS



WorkWise™ Adjustable-Height Workstations

- Improve workspace ergonomics by customising desk height for sitting, standing and the comfort of different users

Adjustable-Height Workstations

- Convert existing fixed-height desks to allow sitting and standing
- Three different styles suit a range of applications and preference

TRIPP LITE'S TOP SELLERS

Adjustable-Height Workstations	
Model	Description
WWSS1327CP	Desk-Clamp Workstation, Single Display
WWSS1327RWTC	Wall-Mount Workstation with Thin-Client Mount
WWSS1332C	Desk-Mount Workstation, Single Display
WWSS1332W	Wall-Mount Workstation, Single Display
WWSSD3622	Desktop Workstation
WWSSDC	Desk-Clamp Workstation
WWSSDT	Desktop Workstation

PRODUCTS

INVERTER SOLUTIONS



Power Inverters

- Convert low-voltage DC power to standard AC power for use in RVs, cars, work trucks and boats
- Provide continuous emergency power to homes and belongings during power outages
- Expandable battery capabilities provide power for extended periods

TRIPP LITE'S TOP SELLERS

Compact Inverter					
Model	Voltage Compatibility (VDC)	Output Wattage (Continuous/Peak)		AC Receptacles	
PVINT375	12VDC	375W/600W		1	
Inverter/Chargers					
Model	Voltage Compatibility (VDC)	Output Wattage (Continuous/Peak)	AC Receptacles	AVR	Pure Sine Wave
APSX1012SW	12VDC	1000W/2000W	Hardwire	—	Yes
APSX2012SW	12VDC	2000W/4000W	Hardwire	—	Yes
APSX4048SW	48VDC	4000W/8000W	Hardwire	—	Yes
APSX6048VRNET	48VDC	6000W/12000W	Hardwire	Yes	Yes
Heavy-Duty Inverter/Chargers					
APSX750	12VDC	750W/1500W	2 (C13)	—	—
APSX1250	12VDC	1250W/2500W	2 (C13)	—	—
APSINT2012	12VDC	2000W/4000W	Hardwire	—	—
APSINT2424	24VDC	2400W/4800W	Hardwire	—	—
APSX3024SW	24VDC	3000W/6000W	Hardwire	—	Yes
APSINT3636VR	36VDC	3600W/7200W	Hardwire	Yes	—
APSX6048VRNET	48VDC	6000W/12000W	Hardwire	Yes	Yes



Powering and Connecting
Your World

Reliable, Cost-Effective IT Solutions

UPS Systems | Racks | Cooling | PDUs | KVMs

Cables & Connectivity | Display Solutions

Charging Stations & Carts | Standing Desks

Questions? Contact us directly:

Tripp Lite Asia Pacific +972.54.530.4120 | salesint@tripplite.com

Tripp Lite Eastern Europe +36.70.388.7680 | salesint@tripplite.com

Tripp Lite East/West Africa +254.731.137.202 | salesint@tripplite.com

Tripp Lite France +33.0.68.388.9150 | salesint@tripplite.com

Tripp Lite Middle East +971.4.887.1633 | infome@tripplite.com

Tripp Lite Southern Africa +27.76.033.3294 | salesint@tripplite.com

Tripp Lite United Kingdom & Nordics +44.01635.887396 | info-uk@tripplite.com

Tripp Lite Western Europe +44.01234.868010 | salesint@tripplite.com