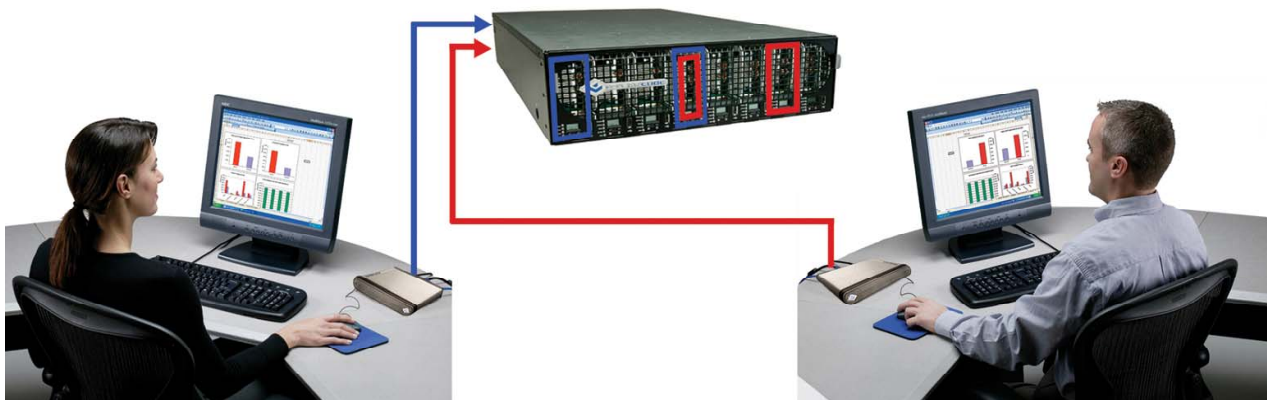


ClearCube Quick KVM

The Software KVM Switch

ClearCube Quick KVM provides a simple software user interface that enables you to switch between multiple Blades in a Cage via the Blade Switching BackPack. This software provides the functionality of an N-way hardware KVM switch, while all you need at your desktop is the standard ClearCube C/Port. Quick KVM performs the administrative function of 8x8 Switching available in ClearCube's Switch Manager 4.0 software, but brings the capability to the end user via an easy to use interface. It can be accessed by simply right clicking on the ClearCube system tray icon, giving multiple users access to multiple Blades.

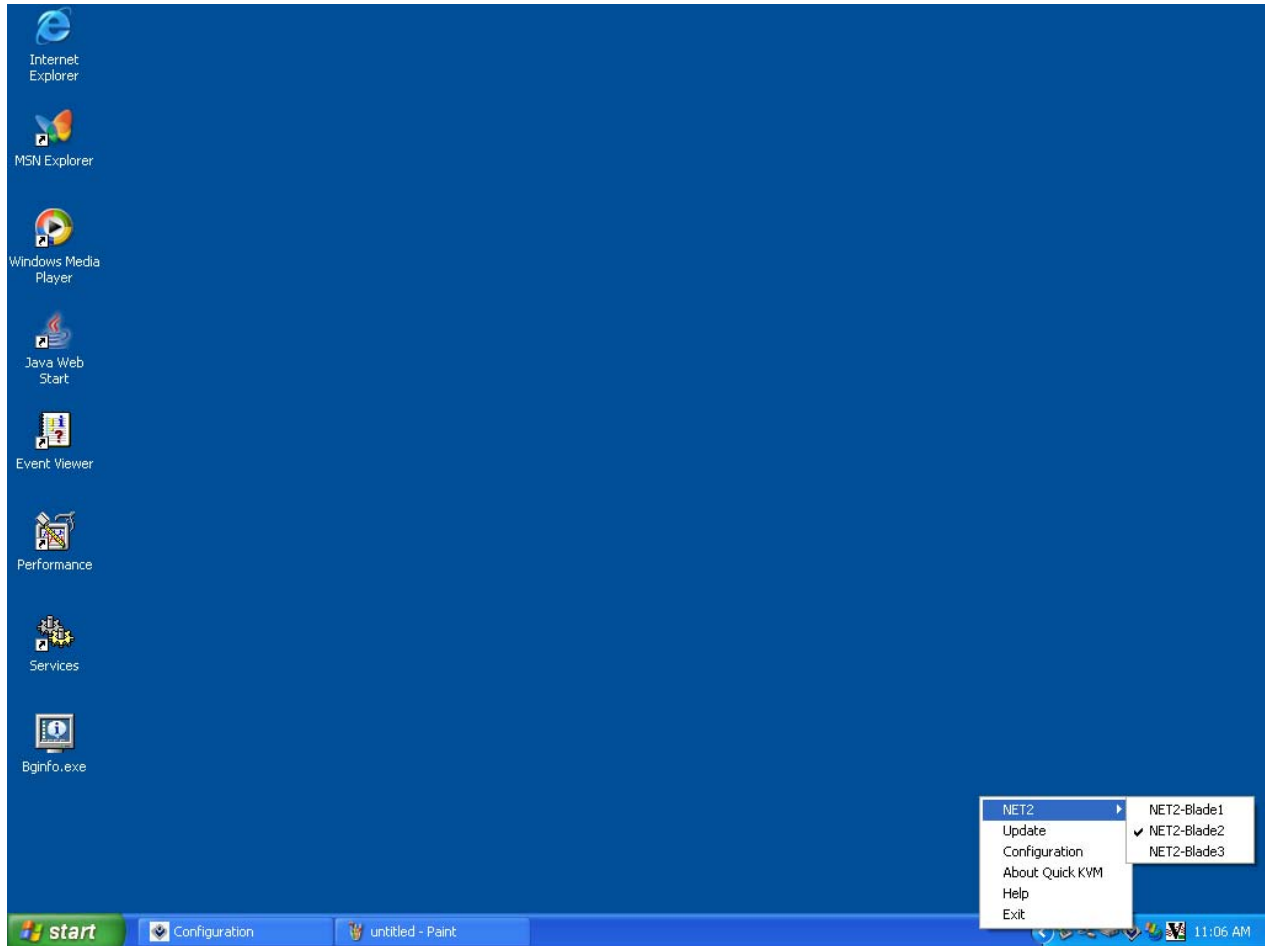


Quick KVM Key Benefits:

- Eliminates the need for costly KVM switch boxes and cables.
- Drastically reduces the amount of desktop clutter associated with traditional KVM switch boxes and their bulky cables.
- Allows multiple users to access and share the same "bank" of Blades resulting in significant savings.
- Simple interface allows end user to switch between multiple Blades without having access to Administrative-level software.

Quick KVM Features:

- Authentication integration with Active Directory.
- Allows N x 8 switching, which means up to 8 users can switch between up to 8 Blades.
- Blocks a user if a switch is attempted to a Blade that is powered off or in use by another C/Port.
- Runs from the system tray on the Windows taskbar.
- Switch Manager Blade Alias names show up in icon menu when clicked.



Quick KVM Menu – The menu from the icon tray allows a user to switch to another blade.

Requirements:

- Windows 2000 Professional or Windows XP Professional
- Switch Manager 4.0
- Blade Switching BackPack with Remote Management Card (RMC)

Ordering Information – Quick KVM is sold as an add-on to ClearCube Switch Manager.

Use the following part number to order Quick KVM:

095014 Quick KVM (12 months of maintenance and support included with purchase.)